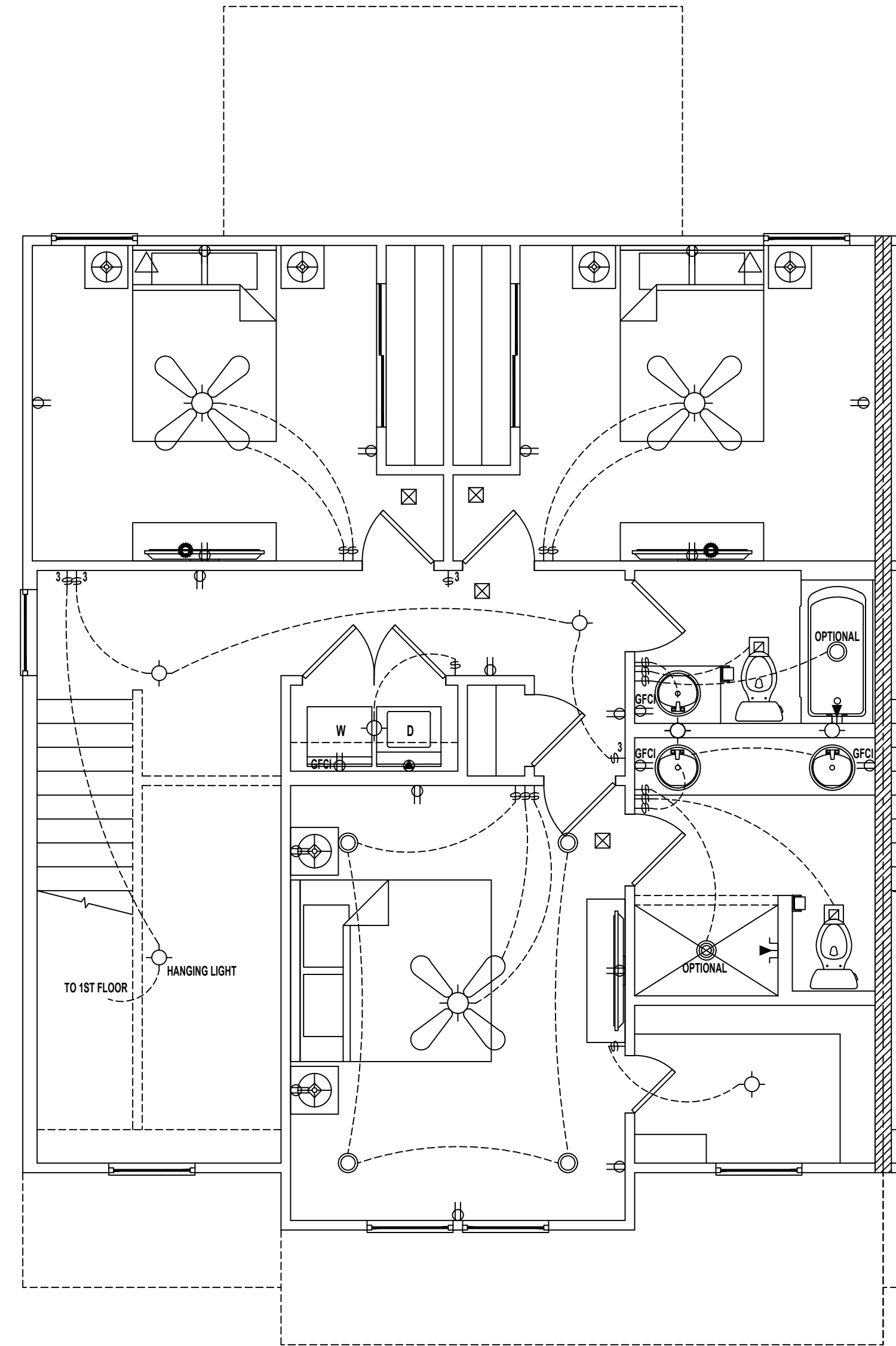


TYPICAL 1ST LEVEL ELECTRIC PLAN
SCALE: 1/4" = 1'-0"



TYPICAL 2ND LEVEL ELECTRIC PLAN
SCALE: 1/4" = 1'-0"

LEGEND

	(2) 110V OUTLETS
	(1) 220V DISCONNECT
	(2) 110V WATERPROOF GFCI OUTLETS (INTERIOR)
	(2) 110V WATERPROOF GFCI OUTLETS (EXTERIOR)
	SINGLE POLE SWITCH
	THREE WAY SWITCH
	LIGHT FIXTURE / EXHAUST FAN
	WALL MOUNTED LIGHT FIXTURE
	CEILING MOUNTED LIGHT FIXTURE
	RECESSED LIGHT FIXTURE
	PENDANT LIGHTING
	PRE-WIRE AND BRACE FOR CEILING FAN
	SMOKE/CARBON MONOXIDE DETECTOR
	OPTIONAL FLOOD LIGHT
	1'x4' FLOURESCENT LIGHT
	CABLE OUTLET
	PHONE OUTLET

- NOTES:
 1. ELECTRICAL LAYOUT MUST MEET STATE AND LOCAL CODES. ELECTRICIAN TO VERIFY.
 2. ALL FIXTURES TO BE CFL OR LED.
 3. ALL OUTLETS THAT ARE NOT GFI TO BE AFCI PROTECTED.

3,144 SF [stick]
Cape Coral, FL

A Project For:
SOUTHERN IMPRESSION HOMES
 5711 Richard St., Suite 1
 Jacksonville, FL 32216

Sheet Description
Electric Plan

Drawn by:	Checked by:
Issued Date:	Scale (I.N.O.):
Printed Date:	1/4" = 1'-0"
	Sheet Number
	5