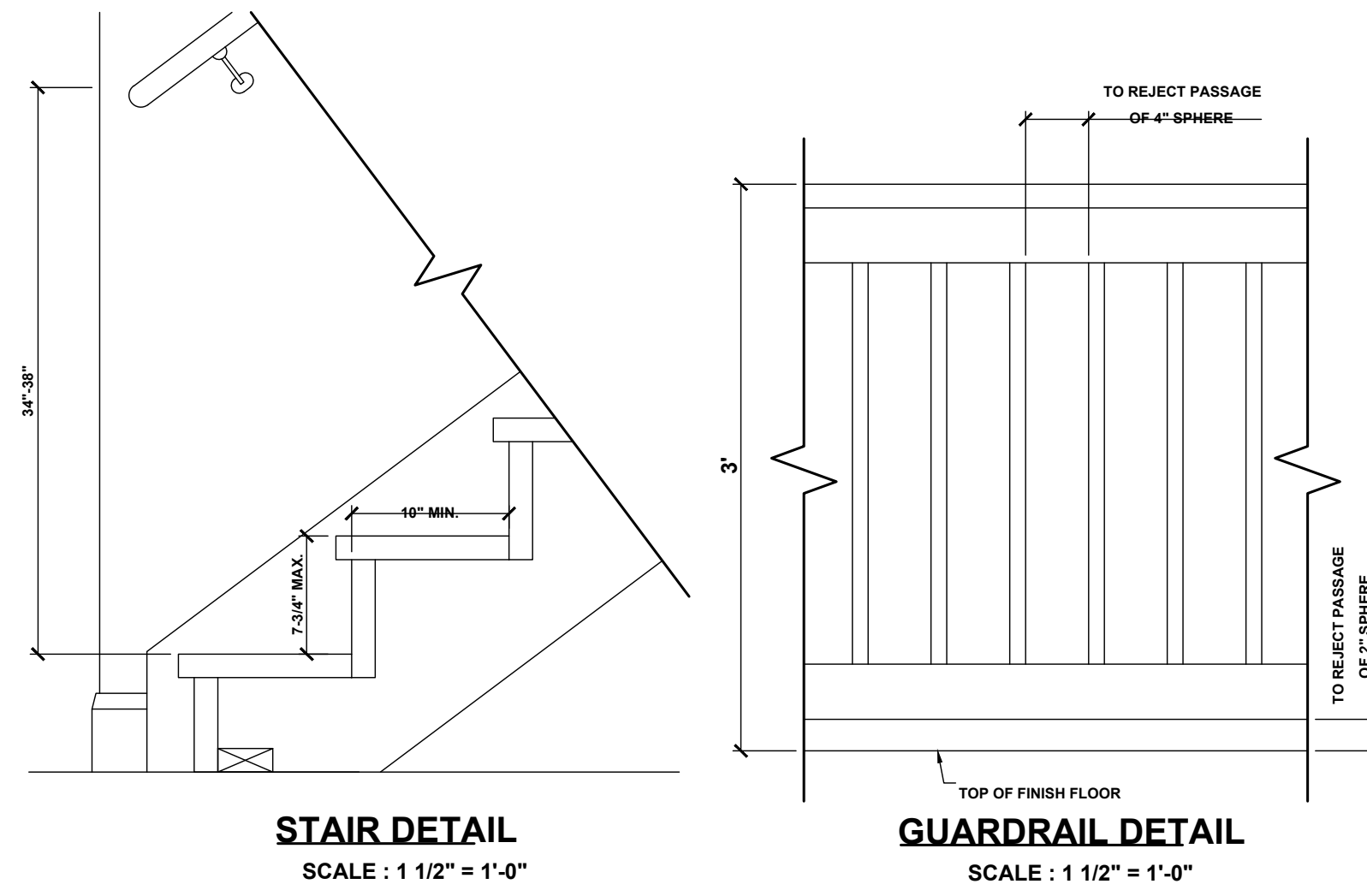


CODE INFORMATION

BUILDING CODE: 2023 FLORIDA BUILDING CODE RESIDENTIAL 8th ADDITION
 2023 FLORIDA BUILDING CODE PLUMBING
 2023 FLORIDA BUILDING CODE MECHANICAL
 2020 NEC

CONSTRUCTION TYPE: 5B
OCCUPANCY CLASS: R-3



GENERAL NOTES:

1. PARKING BUMPER (IF REQUIRED) MUST BE INSTALLED BEFORE C.O.
2. 5/8" TYPE "X" GYP. BOARD REQUIRED ON CEILING OF GARAGE WHERE HABITABLE SPACE IS ABOVE PER FBC R302.6.
3. HVAC PENETRATING RATED ASSEMBLIES TO COMPLY WITH FBC R302.5.
4. UNDER STAIR PROTECTION TO COMPLY WITH FBC R302.7 (IF ACCESSIBLE).

GUARDRAIL NOTE:

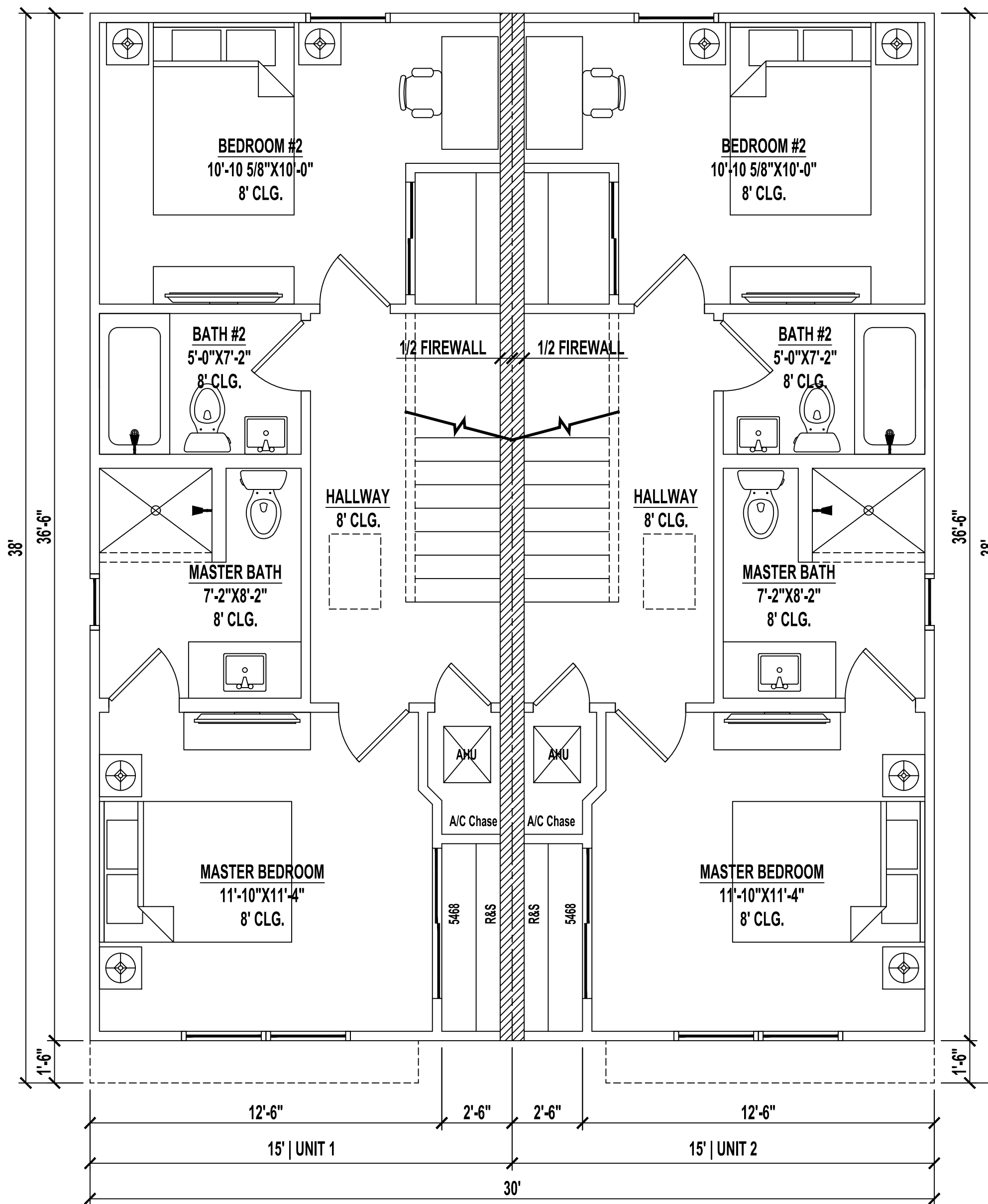
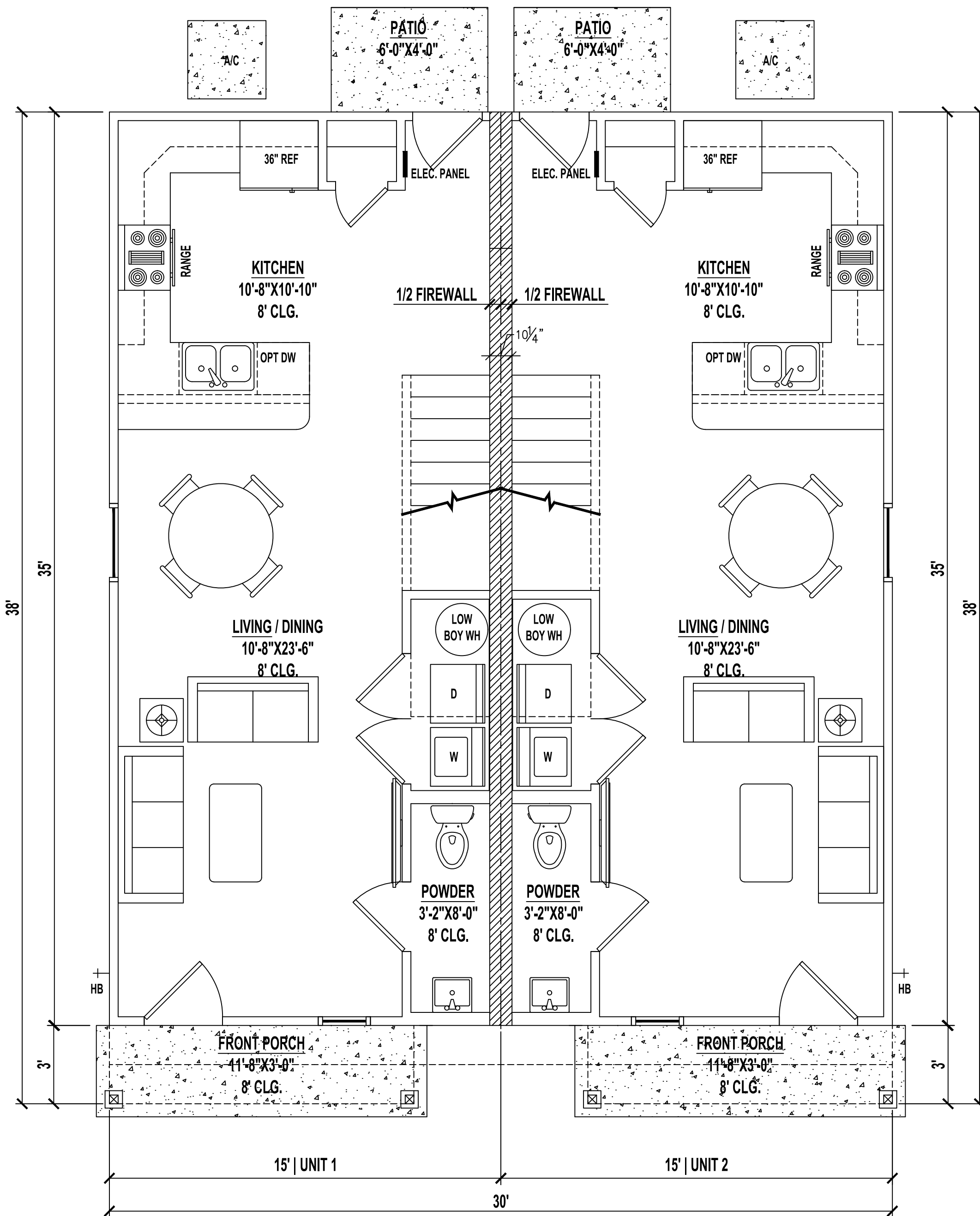
DEPENDING ON FIELD CONDITIONS, DIMENSIONS MAY VARY BUT MUST COMPLY WITH FLORIDA BUILDING CODES R312.1 FOR GUARDRAIL REQUIREMENTS AND OPENINGS.
 *HEIGHT SHALL BE 36" MIN. WHEN PORCH, BALCONY OR RAISED FLOOR EXCEEDS 30" ABOVE FLOOR OR GRADE AND SHALL BE 34" ON OPEN SIDES OF STAIRS THAT EXCEEDS 30" OR MORE ABOVE FLOOR OR GRADE.
 *OPENINGS SHALL HAVE INTERMEDIATE RAILS OR CLOSURES WHICH DO NOT ALLOW PASSAGE OF SPHERE 4" OR GREATER IN DIAMETER. REQUIRED GUARD RAILS ON THE SIDES OF STAIR TREADS SHALL NOT ALLOW SPHERE GREATER THAN 4-3/8" IN DIAMETER TO PASS THROUGH.

HANDRAIL NOTE:

DEPENDING ON FIELD CONDITIONS, DIMENSIONS MAY VARY BUT MUST COMPLY WITH FLORIDA BUILDING CODES R311.7.8 FOR HANDRAIL HEIGHT CONTINUITY AND SIZE.
 *HEIGHT: MUST BE BETWEEN 34-38" MEASURED VERTICALLY FROM SLOPED PLANE.
 *CONTINUITY: HANDRAIL MUST BE CONTINUOUS THROUGH FULL LENGTH OF FLIGHT FROM POINT DIRECTLY ABOVE HIGHEST RISER TO POINT DIRECTLY ABOVE LOWEST RISER. HANDRAIL ENDS SHOULD TERMINATE IN NEWEL POSTS OR SAFETY TERMINAL OR RETURN TO WALL. HANDRAILS SHALL BE ALLOWED TO BE INTERRUPTED BY NEWEL POSTS.
 *SIZE: SHALL HAVE OUTSIDE DIAMETER BETWEEN 1-1/4"-2" IF CIRCULAR. SHALL HAVE BETWEEN 4-4" PERIMETER IF NOT CIRCULAR.

STAIR NOTE:

DEPENDING ON FIELD CONDITIONS, DIMENSIONS MAY VARY BUT MUST COMPLY WITH FLORIDA BUILDING CODES R311.7.5 FOR TREAD DEPTH, RISER HEIGHTS AND STAIR WIDTHS.
 *RISERS: 7-3/4" MAXIMUM WITH NO MORE THAN 3/8" DIFFERENCE BETWEEN HIGHEST AND LOWEST RISER.
 *TREADS: 10" MINIMUM DEPTH WITH NO MORE THAN 3/8" DIFFERENCE BETWEEN LONGEST AND SHORTEST TREAD. THE SUM OF 2 TREADS AND 1 RISER TO BE NOT LESS THAN 24" AND NOT MORE THAN 25".
 *WIDTH: 36" MINIMUM CLEAR WIDTH ABOVE HANDRAIL AND 31-1/2" BELOW HANDRAIL.



BUILDING AREAS PER UNIT

1ST FLOOR HEATED AREA	525 SF
2ND FLOOR HEATED AREA	516 SF
TOTAL HEATED AREA	1,041 SF
FRONT PORCH	35 SF
TOTAL UNDER ROOF	1,076 SF

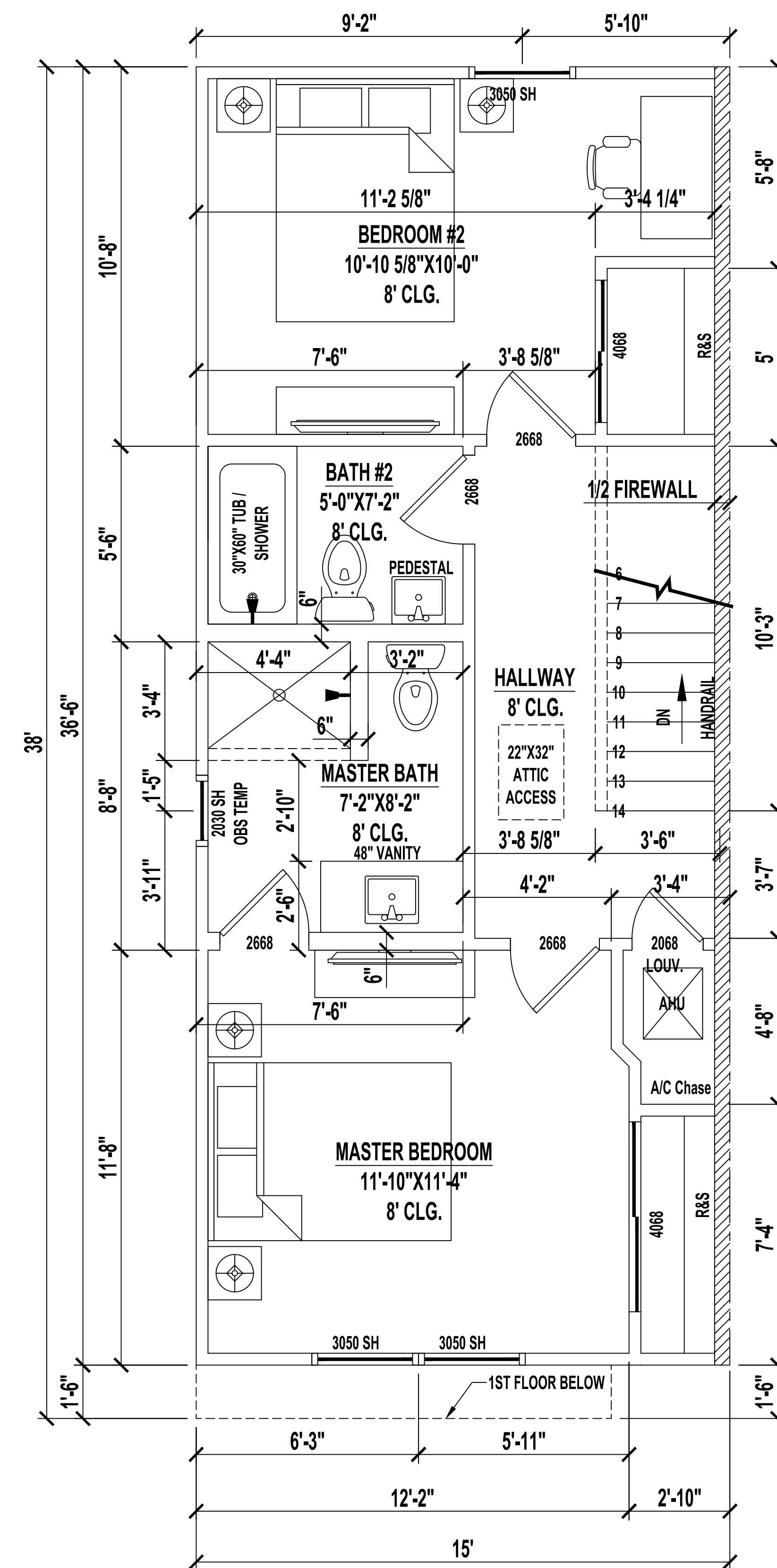
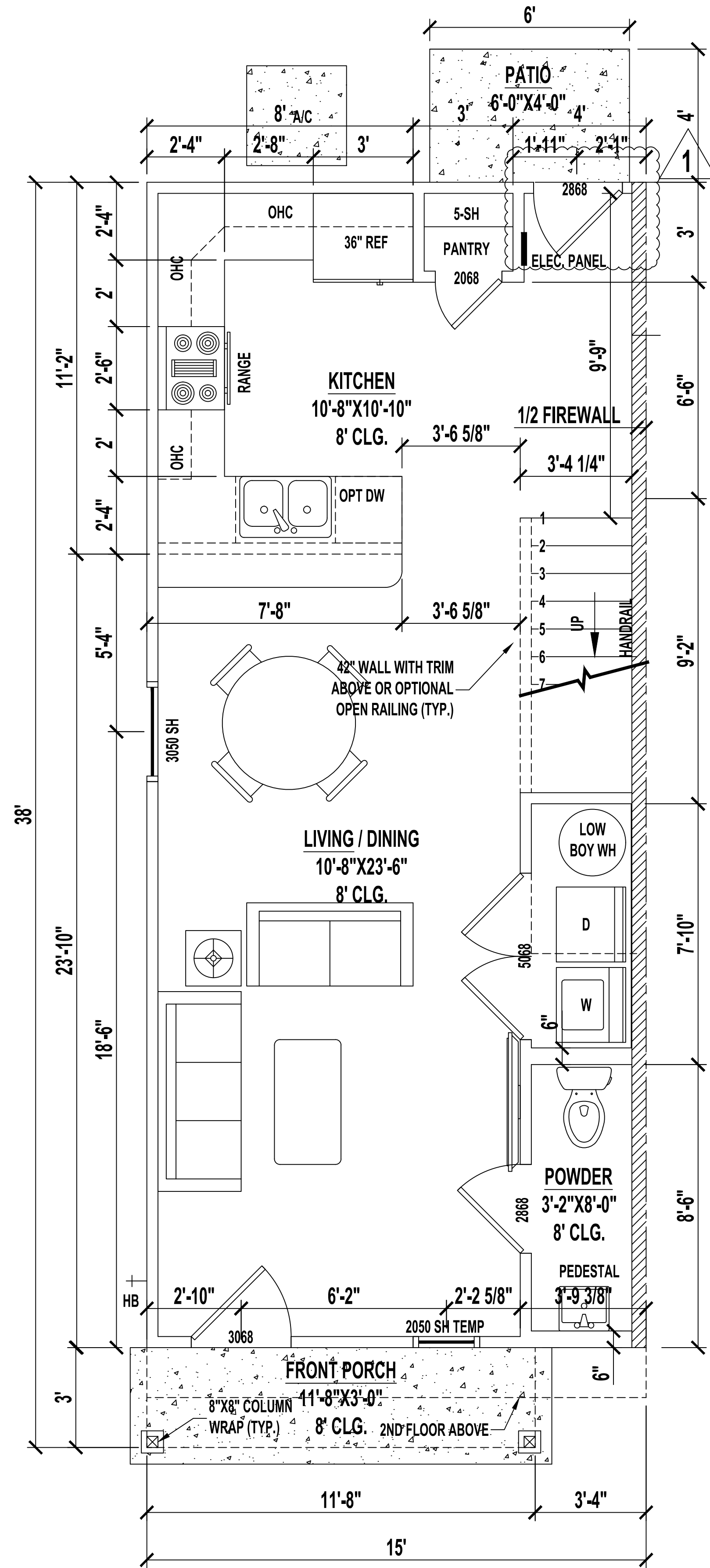
CONDITIONED SPACE = 8,328 CF

NOTES:

1. IF SHOWER HAS GLASS ENCLOSURE, SAFETY GLAZING REQUIRED PER FBC R-308.4.5.
2. PROVIDE TEMPERED GLASS AS REQUIRED.
3. CONTRACTOR MUST VERIFY ALL DIMENSIONS.

Revisions	No.	By	Date
	1		
	2		
	3		
	4		
	5		
A Project For:			
SOUTHERN IMPRESSION HOMES			
5711 Richard St, Suite 1 Jacksonville, FL 32216			
Sheet Description			
A1.1-Overall Floor Plan			
Drawn by:	Checked by:		
Issued Date:	Scale (U.N.O.):		
Printed Date:	Sheet Number		

DUPLEX
2,076 SF
 Jacksonville, FL



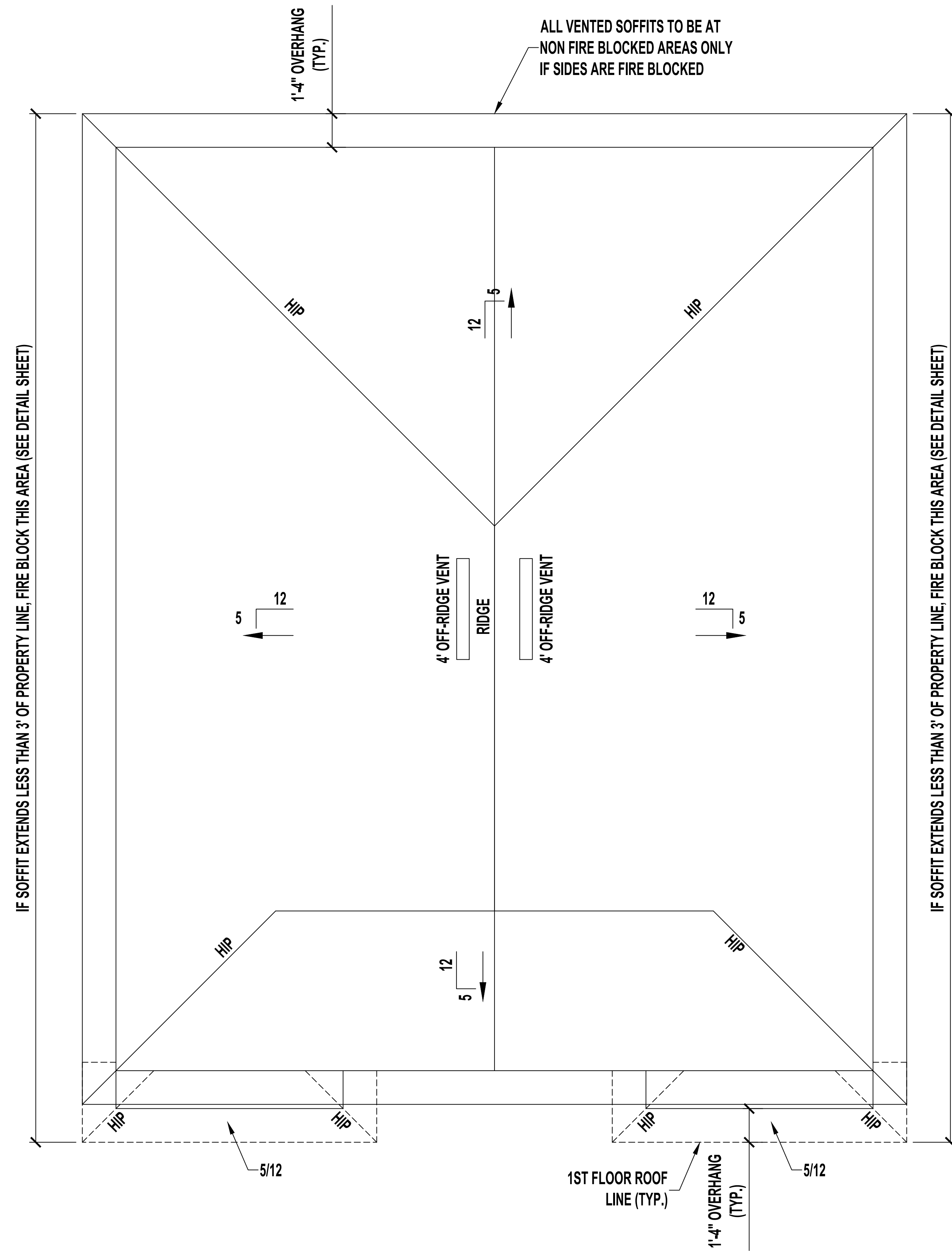
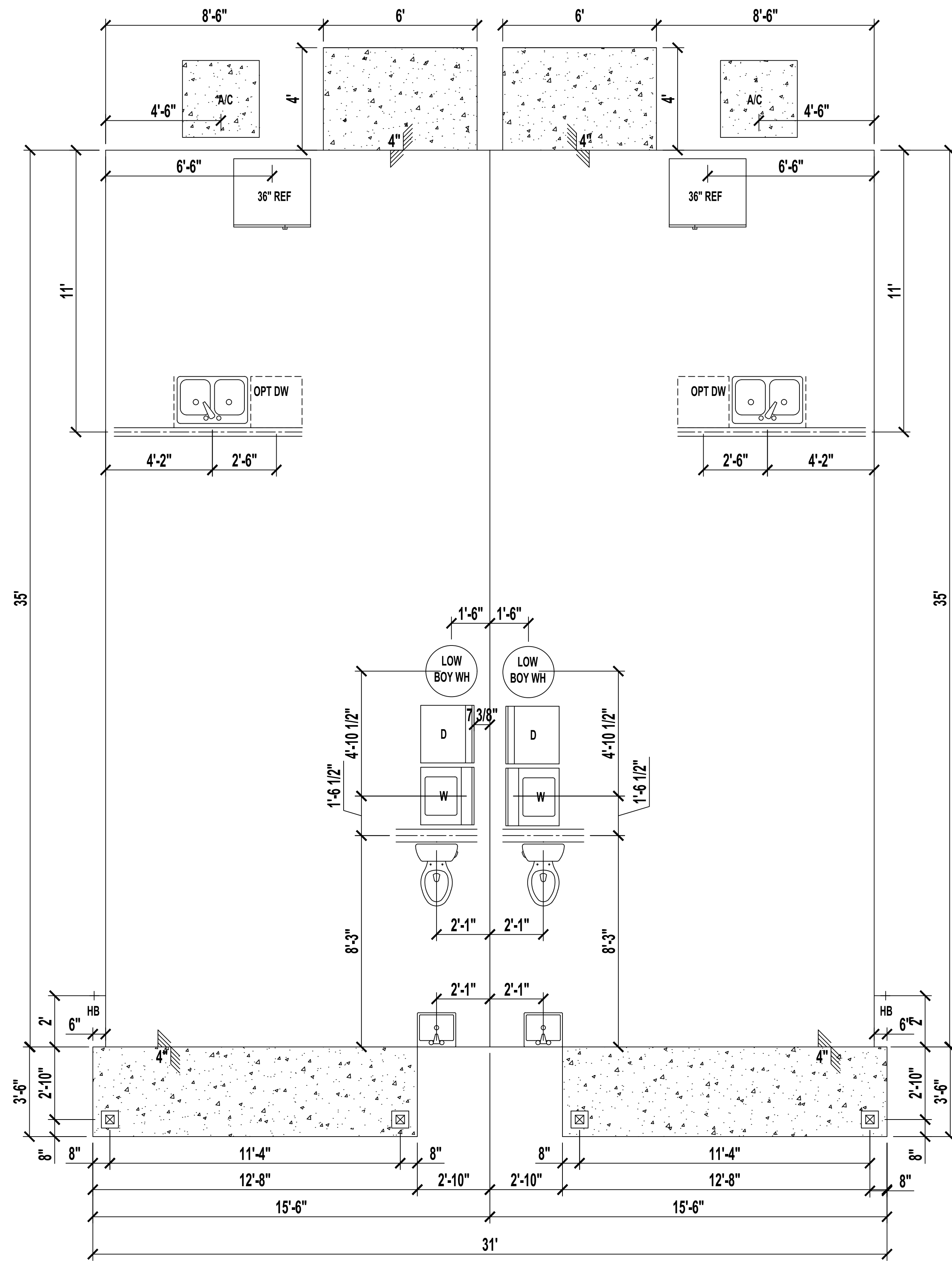
No	Revisions	Date	By
1			
2			
3			
4			
5			
6			

DUPLEX
2,076 SF
Jacksonville, FL

A Project For:
SOUTHERN IMPRESSION HOMES
5711 Richard St., Suite 1
Jacksonville, FL 32216

Sheet Description
A1.2-Floor Plan

Drawn by:	Checked by:
Issued Date:	Scale (U.N.O.):
Printed Date:	Sheet Number:



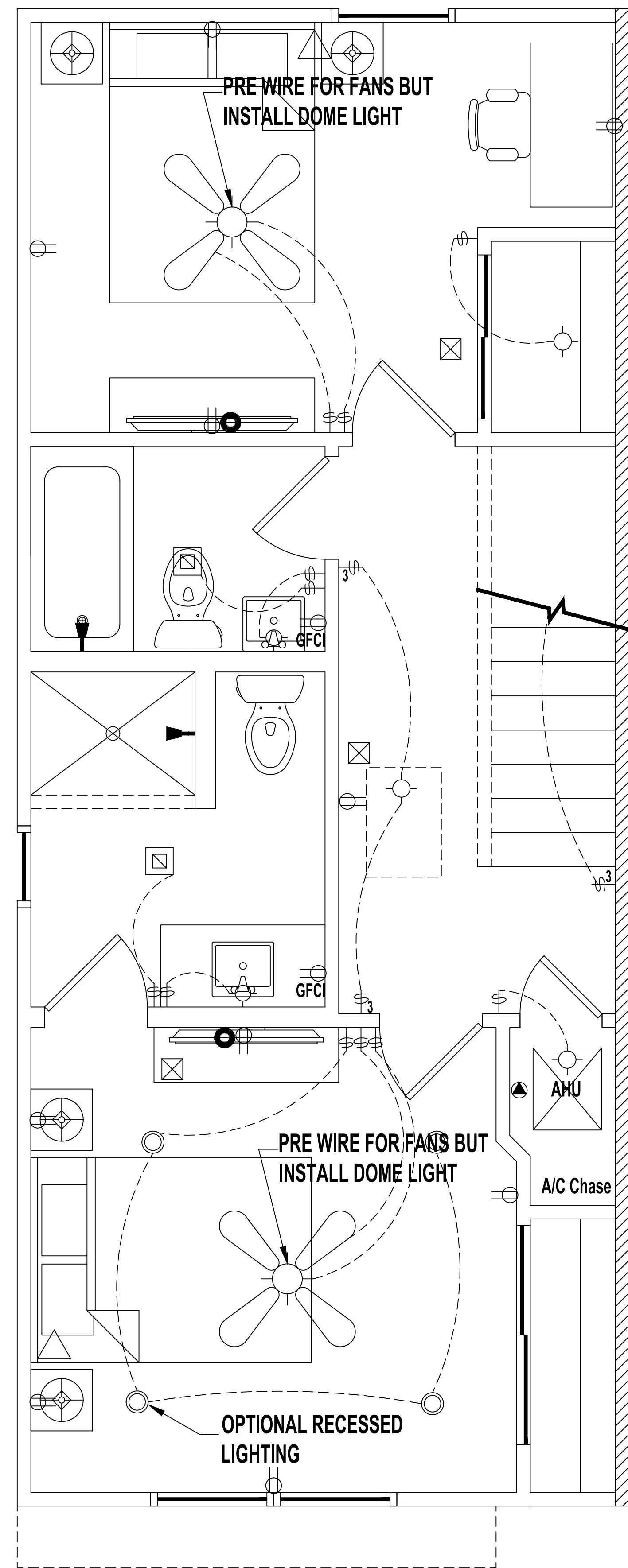
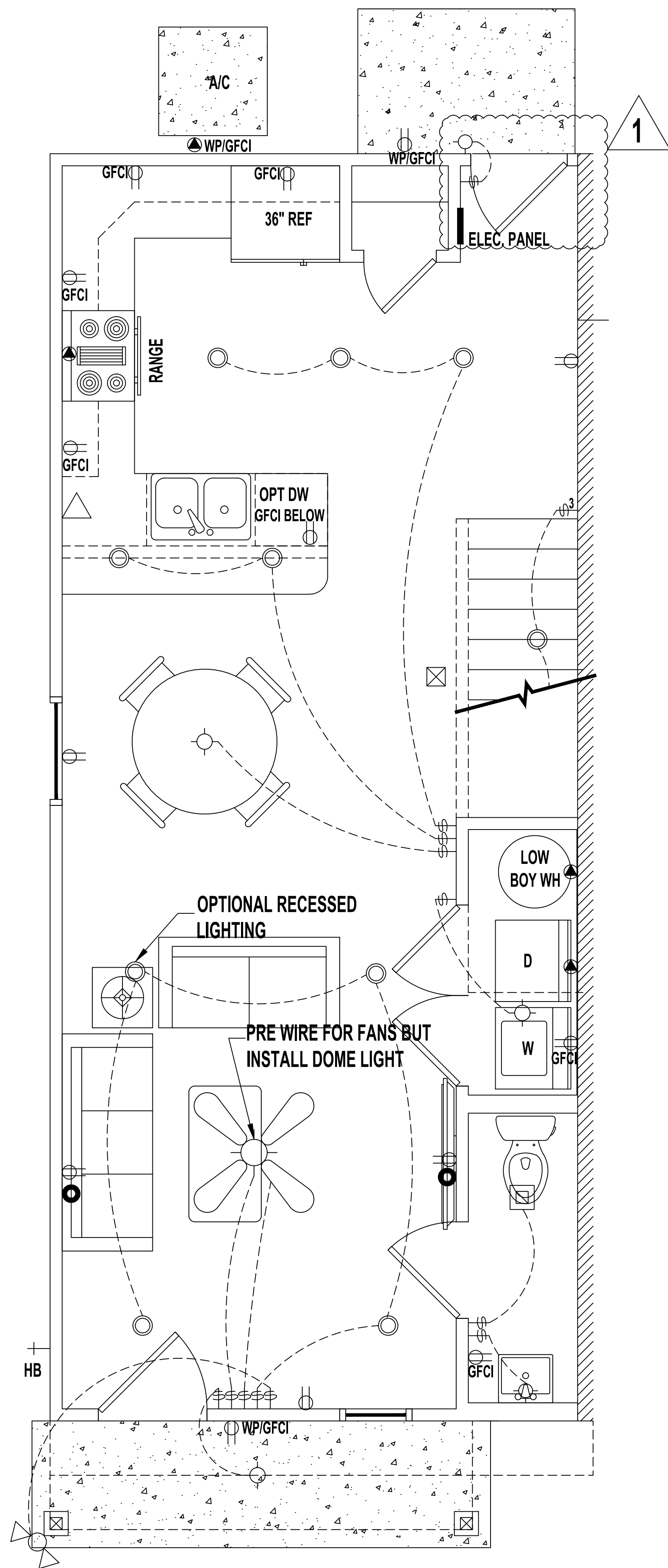
No	Revisions	Date	By
1			
2			
3			
4			
5			
6			

DUPLEX
2,076 SF
Jacksonville, FL

SOUTHERN IMPRESSION
HOMES
5711 Richard St., Suite 1
Jacksonville, FL 32216

A Project For:
Sheet Description
A1.3-Foundation
& Roof Plans

Drawn by: _____ Checked by: _____
Issued Date: _____ Scale (U.S.O.): _____
Printed Date: _____ Sheet Number: _____



LEGEND

	(2) 110V OUTLETS
	(1) 220V DISCONNECT
	(2) 110V WATERPROOF GFCI OUTLETS (INTERIOR)
	(2) 110V WATERPROOF GFCI OUTLETS (EXTERIOR)
	SINGLE POLE SWITCH
	THREE WAY SWITCH
	LIGHT FIXTURE / EXHAUST FAN
	WALL MOUNTED LIGHT FIXTURE
	CEILING MOUNTED LIGHT FIXTURE
	LED LIGHTING
	PENDANT LIGHTING
	PRE-WIRE AND BRACE FOR CEILING FAN
	SMOKE/CARBON MONOXIDE DETECTOR
	OPTIONAL FLOOD LIGHT
	1'X4' FLOURESCENT LIGHT
	CABLE OUTLET
	PHONE OUTLET

- NOTES:**
1. ELECTRICAL LAYOUT MUST MEET STATE AND LOCAL CODES. ELECTRICIAN TO VERIFY.
 2. ALL FIXTURES TO BE CFL OR LED.
 3. ALL OUTLETS THAT ARE NOT GFI TO BE AFCI PROTECTED.

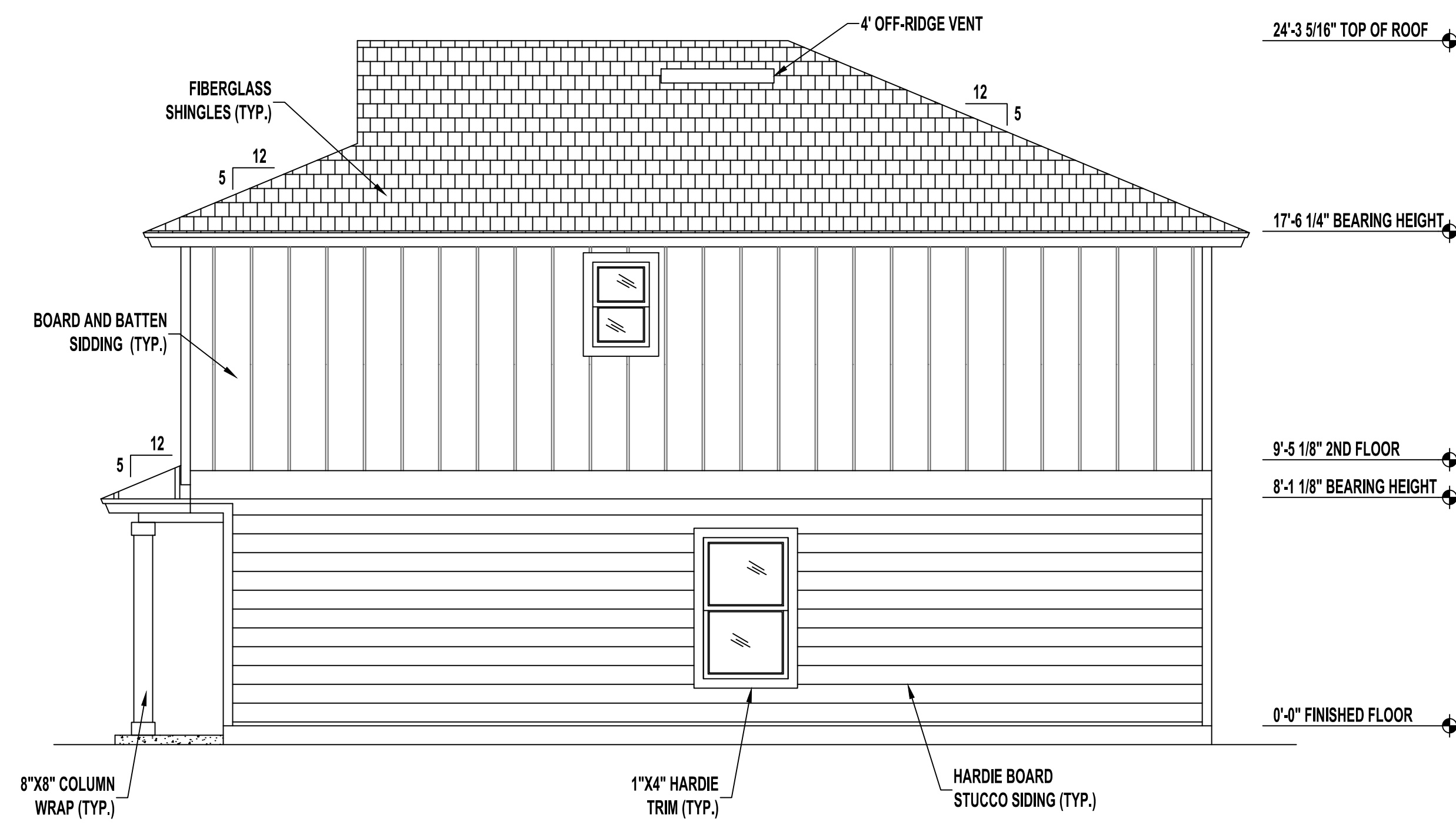
No	Revisions	Date	By
1			
2			
3			
4			
5			
6			

DUPLEX
2,076 SF
Jacksonville, FL

A Project For:
SOUTHERN IMPRESSION HOMES
5711 Richard St., Suite 1
Jacksonville, FL 32216

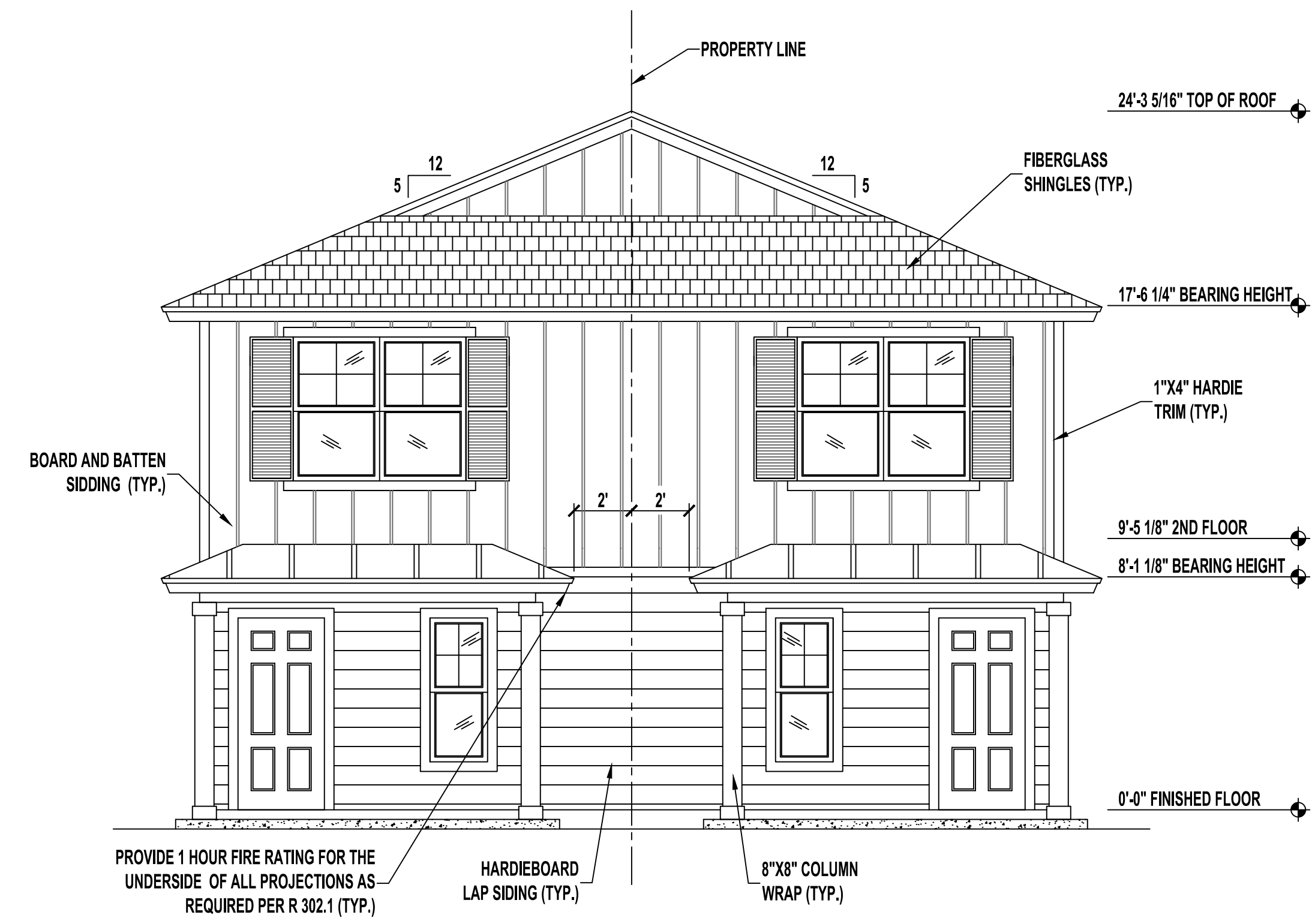
Sheet Description:
A1.4-Electric Plan

Drawn by:	Checked by:
Issued Date:	Scale (U.N.O.):
Printed Date:	Sheet Number



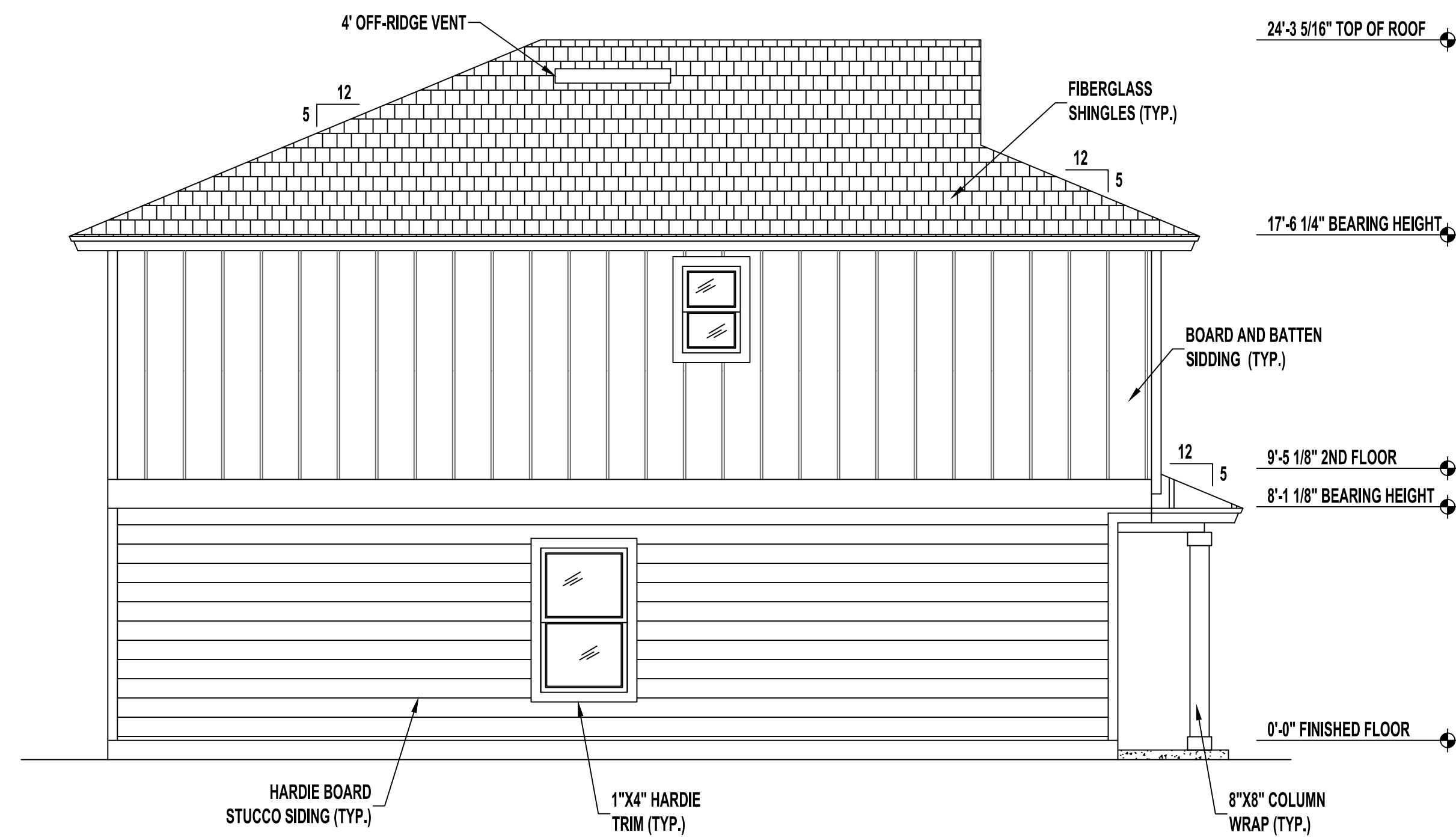
LEFT SIDE ELEVATION

SCALE: 1/4" = 1'-0"



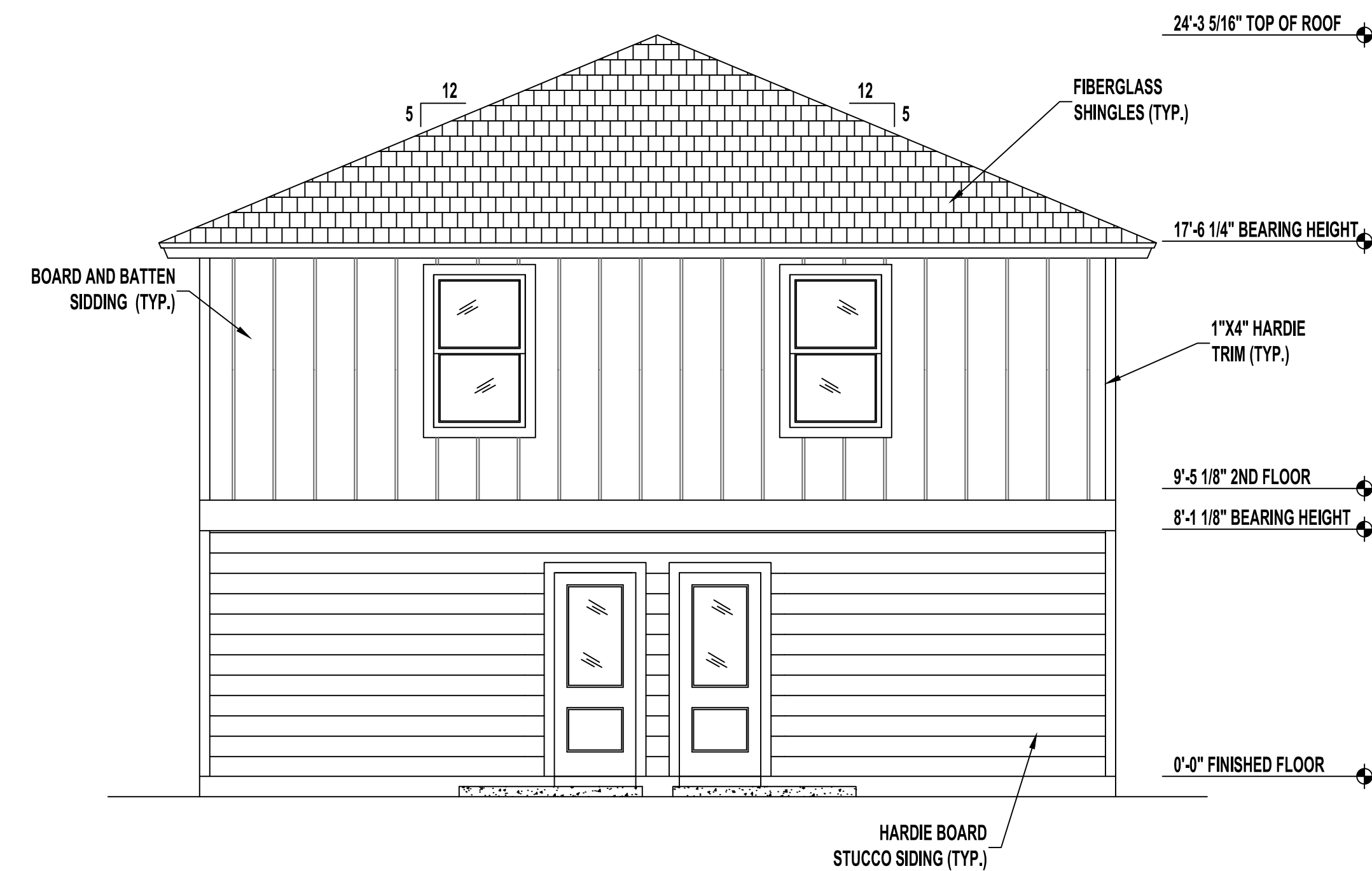
FRONT ELEVATION

SCALE: 1/4" = 1'-0"



LEFT SIDE ELEVATION

SCALE: 1/4" = 1'-0"



REAR ELEVATION

SCALE: 1/4" = 1'-0"

No	Revisions	Date	By
1			
2			
3			
4			
5			
6			

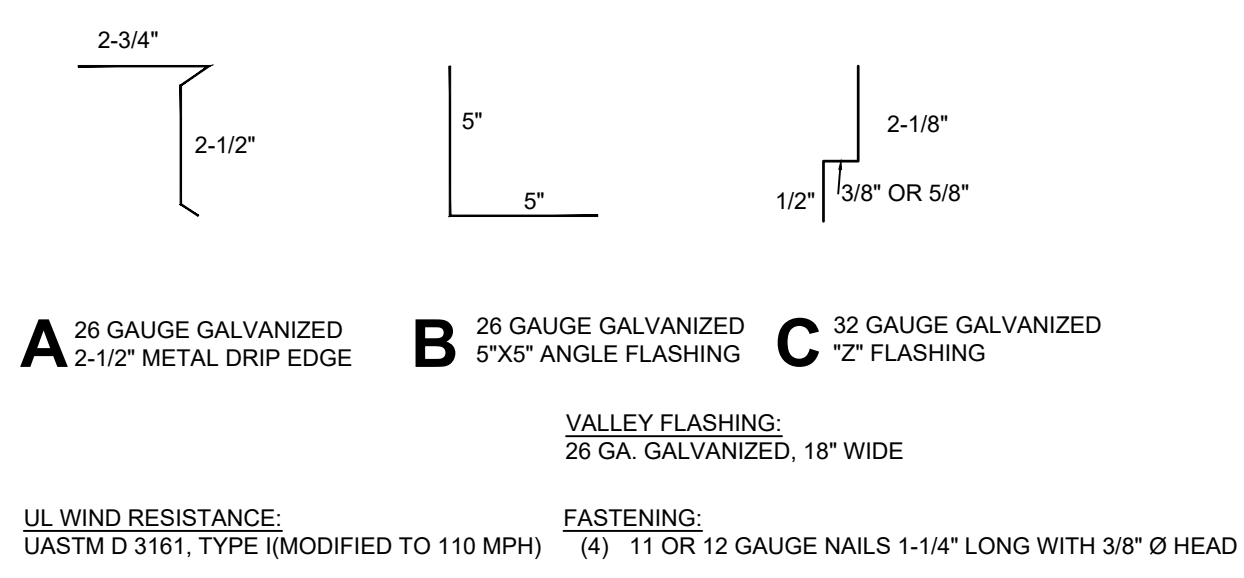
DUPLEX
2,076 SF
Jacksonville, FL

SOUTHERN IMPRESSION
HOMES
5711 Richard St., Suite 1
Jacksonville, FL 32216

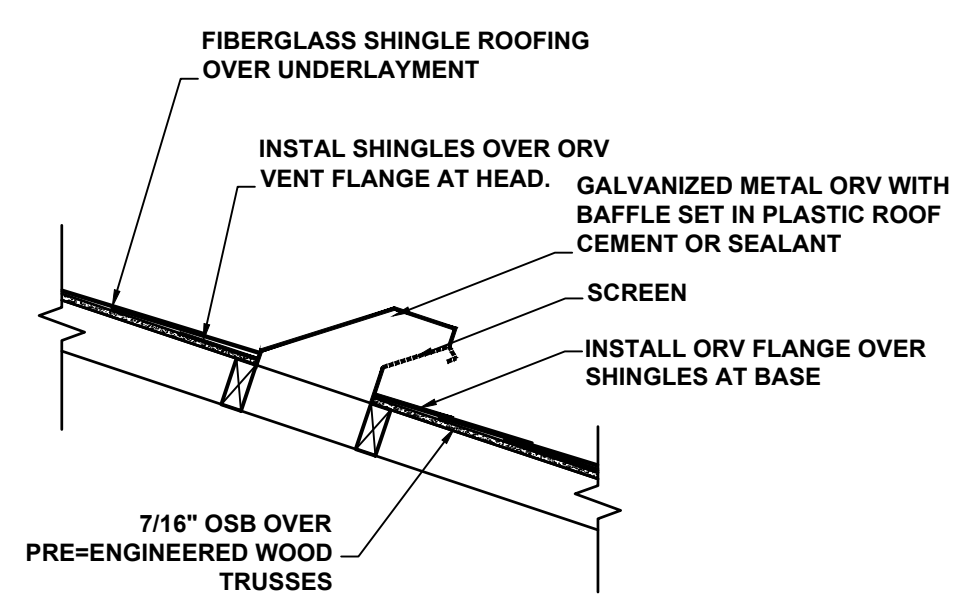
A Project For:

Sheet Description
A2.1-Elevations

Drawn by: _____
Checked by: _____
Issued Date: _____
Scale (U.N.O.): _____
Printed Date: _____
Sheet Number: _____



FLASHING DETAILS AND SHINGLE INFORMATION
SCALE : 3" = 1'-0"

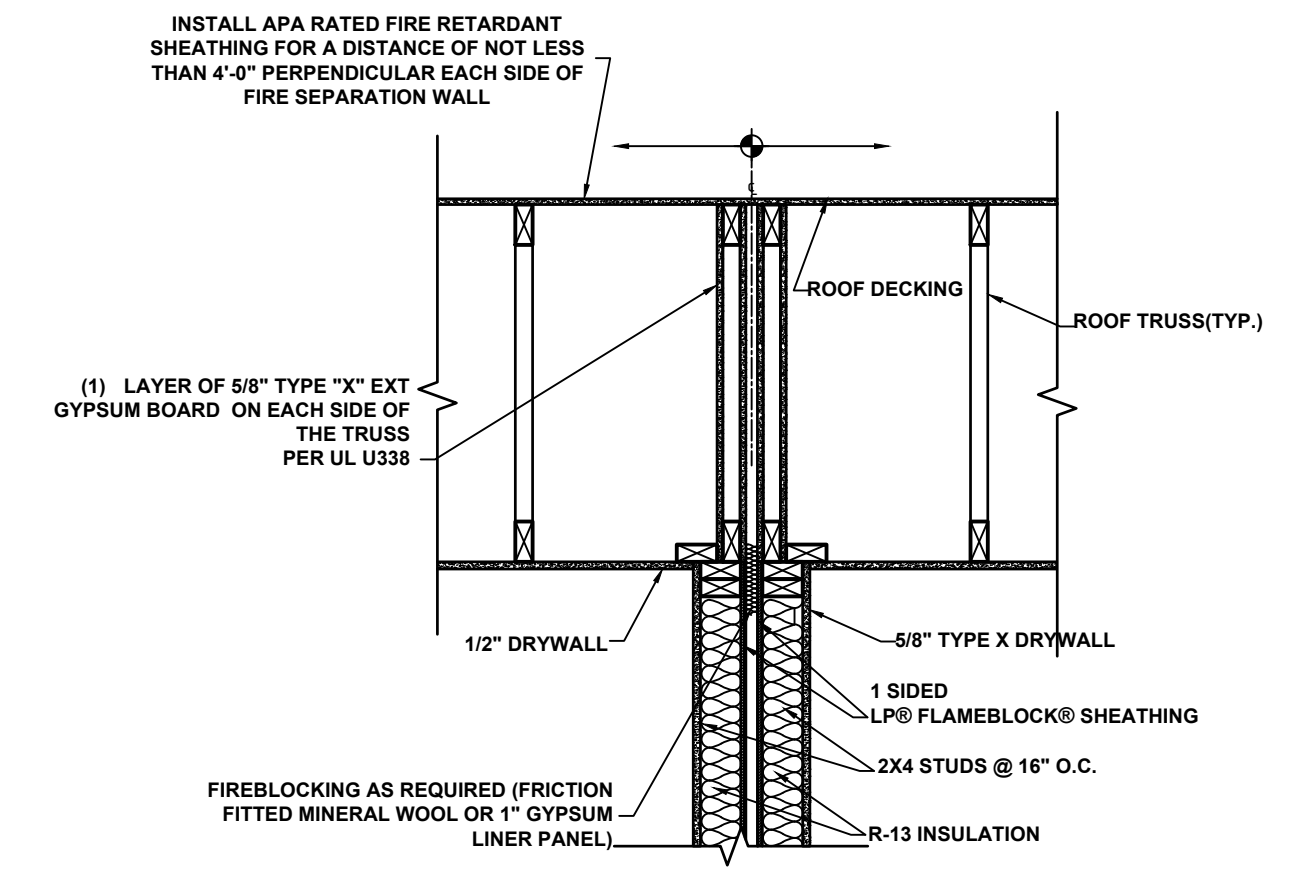


OFF RIDGE VENT DETAIL
NOT TO SCALE

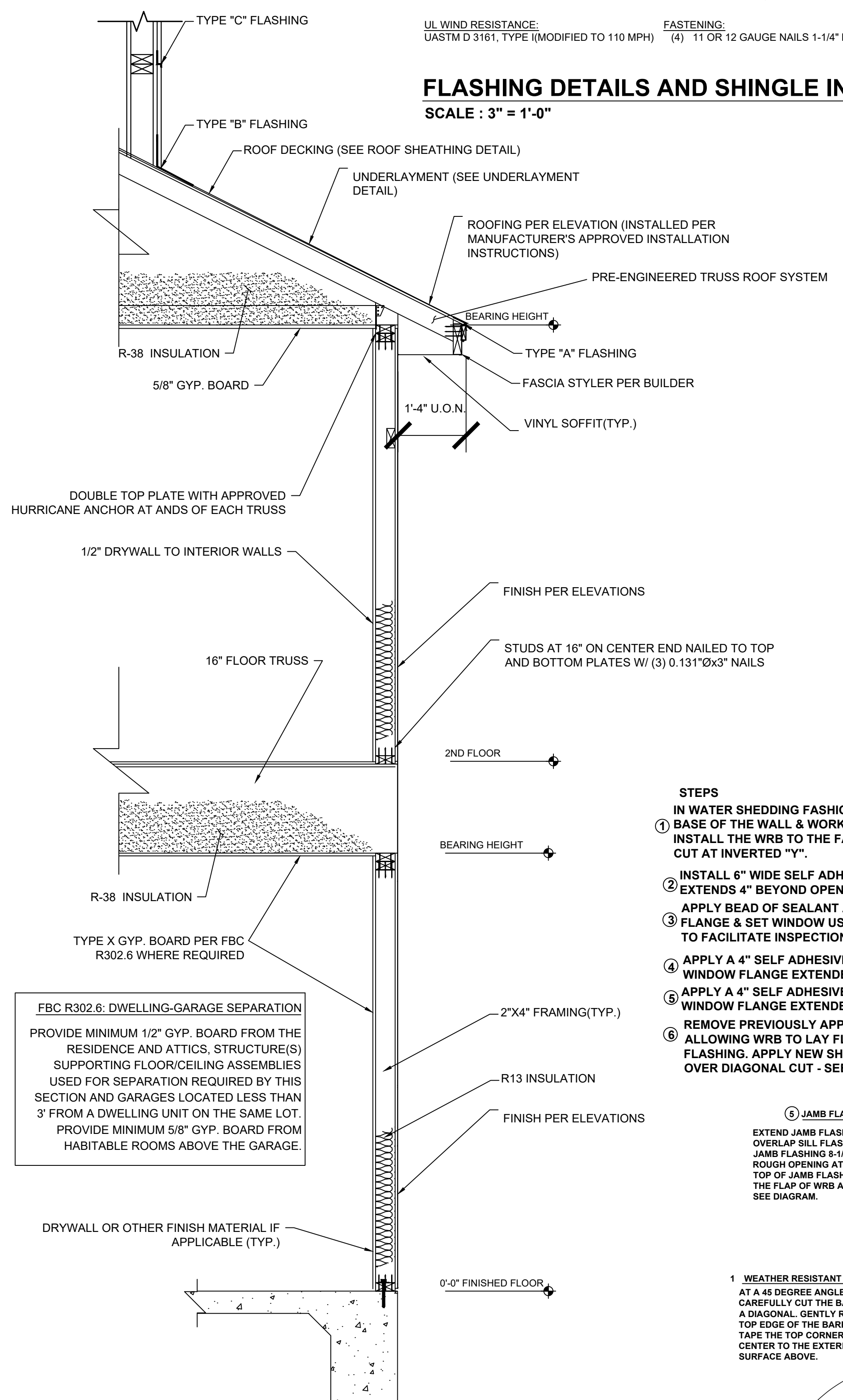
R703.4 FLASHING

- APPROVED CORROSION-RESISTANT FLASHING SHALL BE APPLIED SHINGLE-FASHION SUCH A MANOR TO PREVENT ENTRY OF WATER INTO THE WALL CAVITY OR PENETRATION OF WATER TO THE BUILDING STRUCTURAL FRAMING COMPONENTS. THE FLASHING SHALL EXTEND TO THE SURFACE OF THE EXTERIOR WALL FINISH. APPROVED ANTI-CORROSION RESISTANT FLASHING SHALL BE INSTALLED AT ALL OF THE FOLLOWING LOCATION:
1. AT THE INTERSECTION OF CHIMNEYS OR OTHER MASONRY CONSTRUCTION WITH FRAME OR STUCCO WALLS, WITH PROJECTING LIPS ON BOTH SIDES UNDER STUCCO COPINGS.
 2. UNDER AN AT ENDS OF MASONRY, WOOD OR METAL COPINGS AND SILLS.
 3. CONTINUOUSLY ABOVE ALL PROJECTING WOOD TRIM.
 4. WHERE EXTERIOR PORCHES, DECKS OR STAIRS ATTACH TO WALL OR FLOOR ASSEMBLY OR WOOD FRAMED CONSTRUCTION.
 5. AT ALL WALL AND ROOD INTERSECTIONS.
 6. AT BUILT IN GUTTERS.

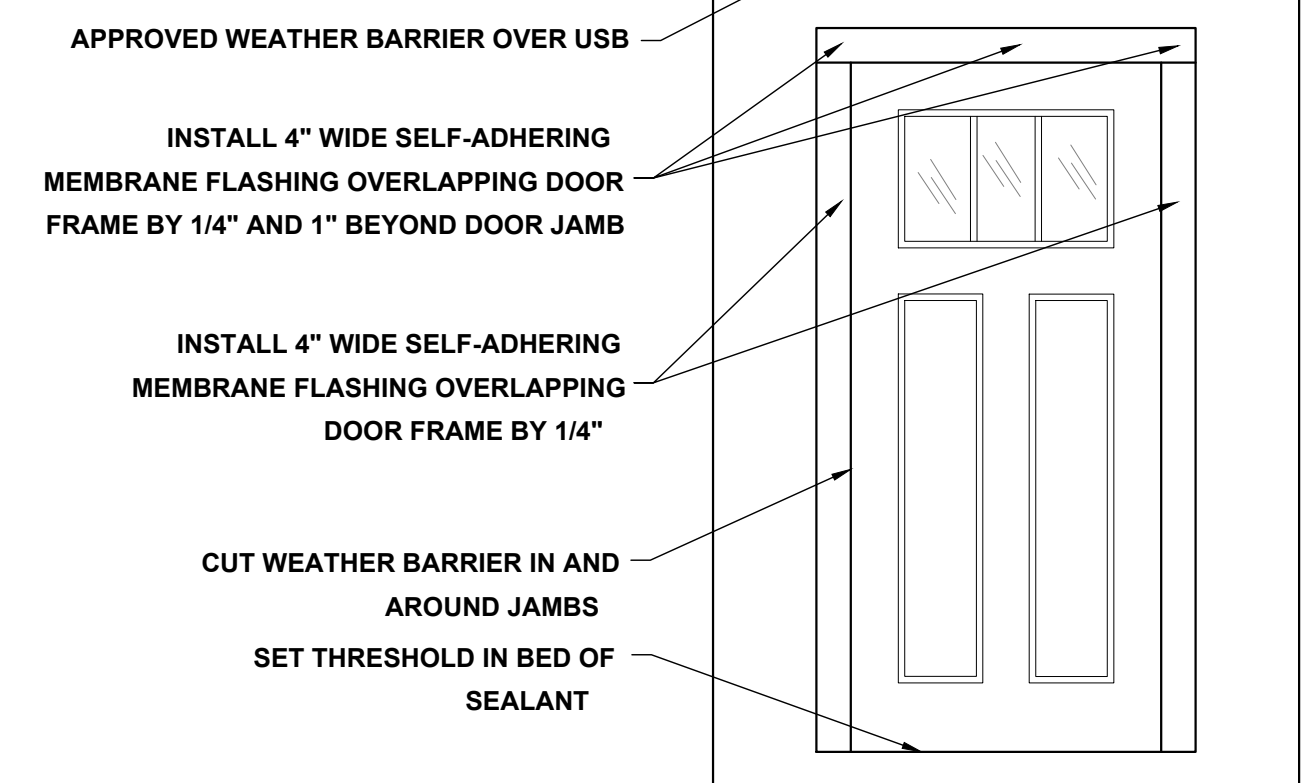
- VALLEY SHINGLE E INSTALLATION:
INSTALL SHINGLES USING WEAVE METHOD
1. EXTEND (1) FULL END SHINGLE MINIMUM 1/2" PAST CENTER LINE OF VALLEY. SEE MANUFACTURERS WRITTEN INSTRUCTIONS FOR ADDITIONAL INSTALL INFORMATION.
 2. DONOT NAIL MINIMUM 6" FROM VALLEY CENTER LINE.



TYPICAL ATTIC PARTY WALL - UL
DESIGN: U388
SCALE: N/A

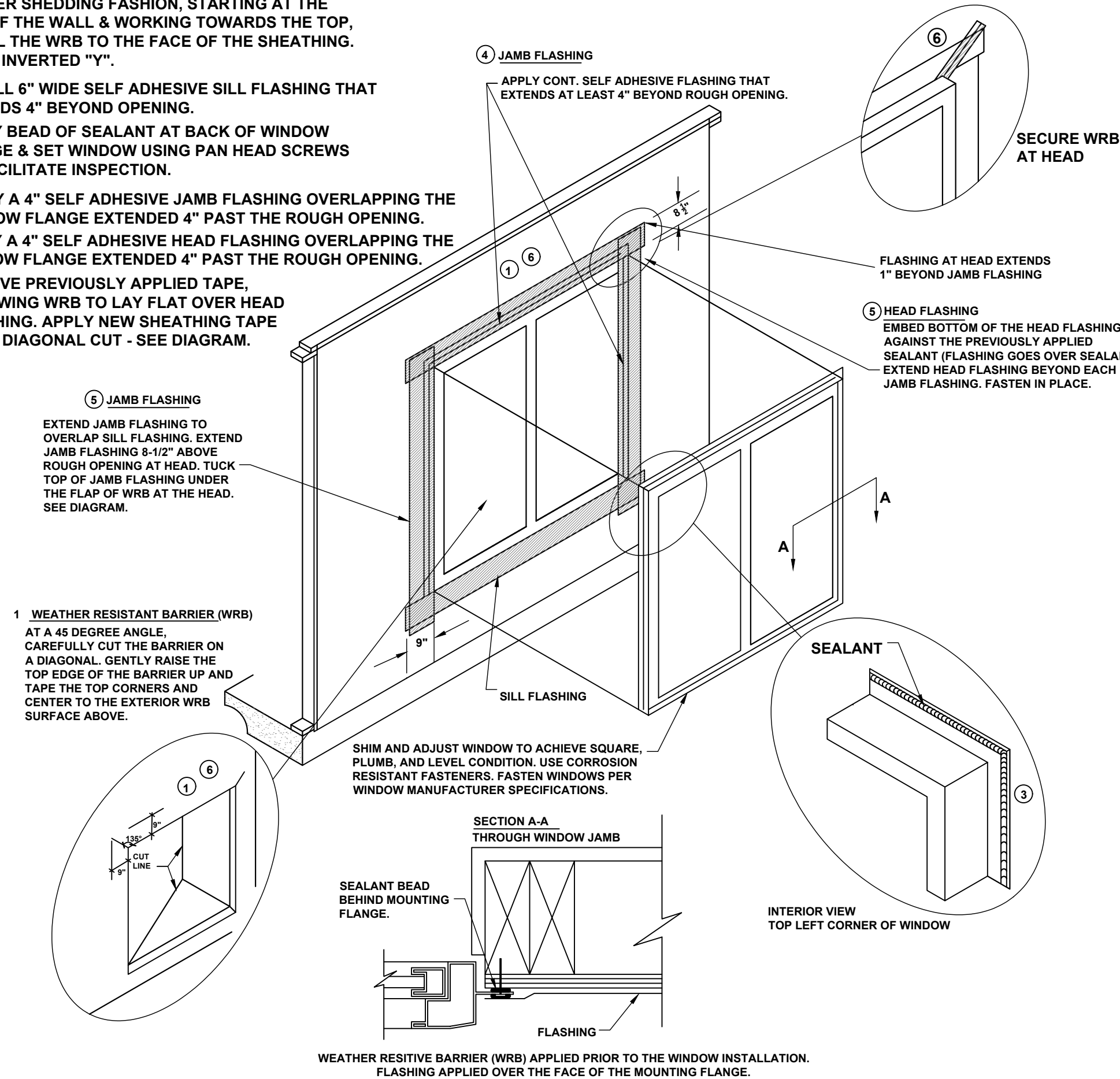


TYPICAL WALL SECTION
SCALE : N/A

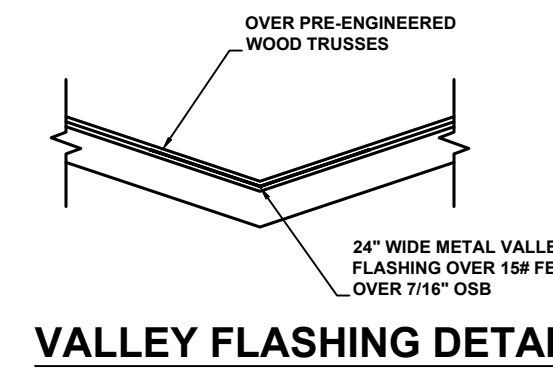


DOOR FLASHING INSTALLATION AND DETAIL
SCALE: N.T.S.

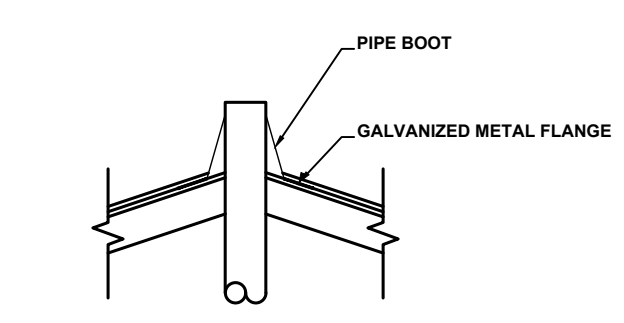
- STEPS
- IN WATER SHEDDING FASHION, STARTING AT THE BASE OF THE WALL & WORKING TOWARDS THE TOP, INSTALL THE WRB TO THE FACE OF THE SHEATHING. CUT AT INVERTED "Y".
1. INSTALL 6" WIDE SELF ADHESIVE SILL FLASHING THAT EXTENDS 4" BEYOND OPENING.
 2. APPLY BEAD OF SEALANT AT BACK OF WINDOW FLANGE & SET WINDOW USING PAN HEAD SCREWS TO FACILITATE INSPECTION.
 3. APPLY A 4" SELF ADHESIVE JAMB FLASHING OVERLAPPING THE WINDOW FLANGE EXTENDED 4" PAST THE ROUGH OPENING.
 4. APPLY A 4" SELF ADHESIVE HEAD FLASHING OVERLAPPING THE WINDOW FLANGE EXTENDED 4" PAST THE ROUGH OPENING.
 5. REMOVE PREVIOUSLY APPLIED TAPE. ALLOWING WRB TO LAY FLAT OVER HEAD FLASHING. APPLY NEW SHEATHING TAPE OVER DIAGONAL CUT - SEE DIAGRAM.
 6. JAMB FLASHING



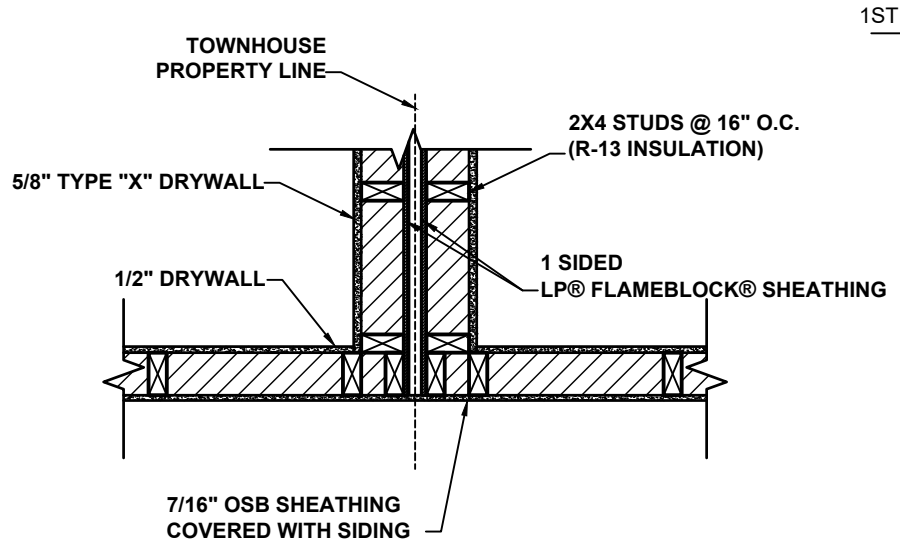
WINDOW INSTALLATION
SCALE: N.T.S.



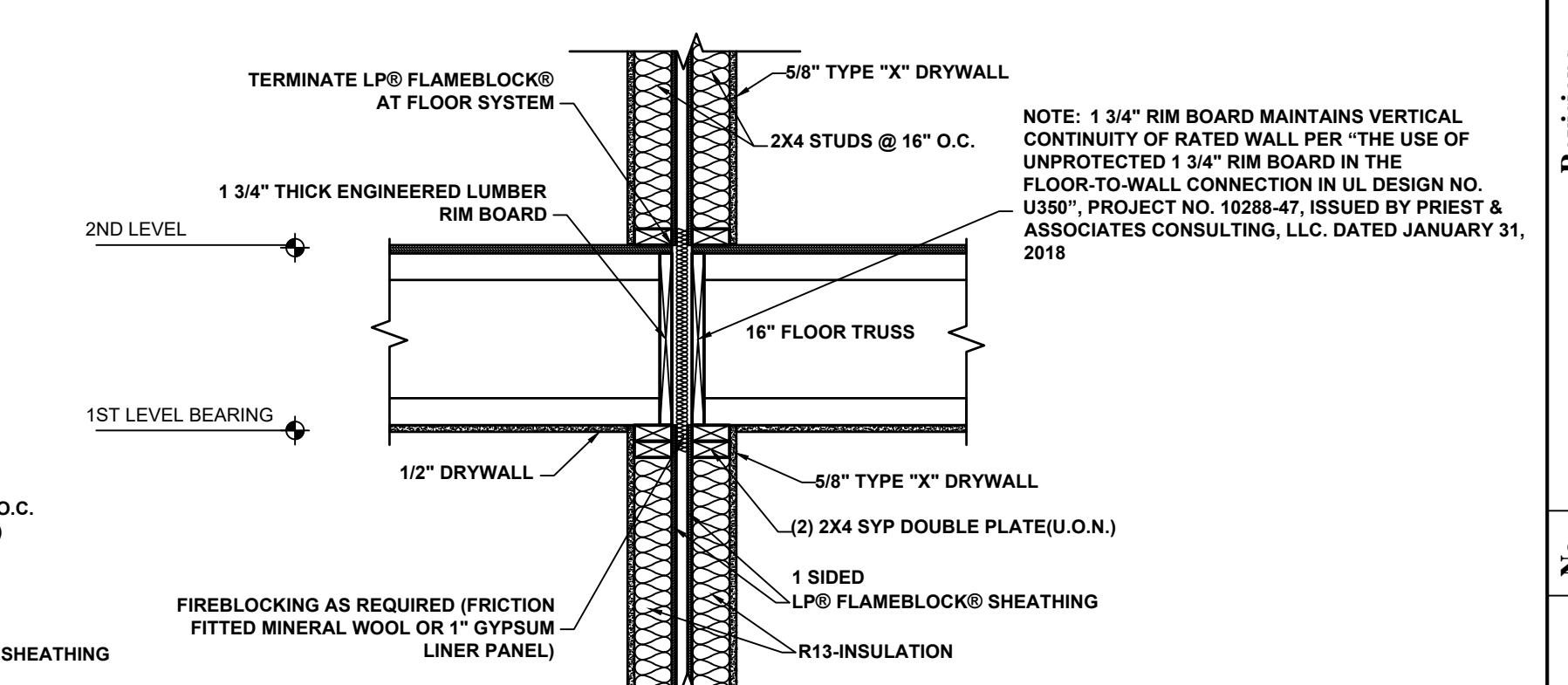
VALLEY FLASHING DETAIL



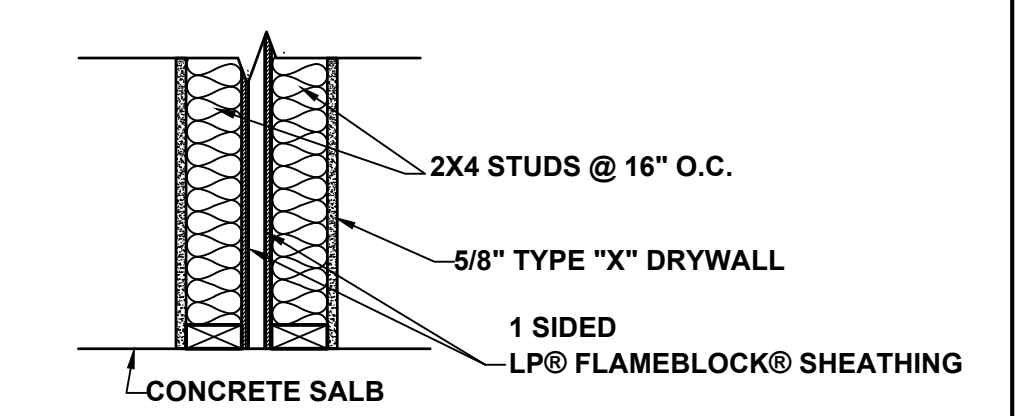
PLUMBING STACK FLASHING DETAIL



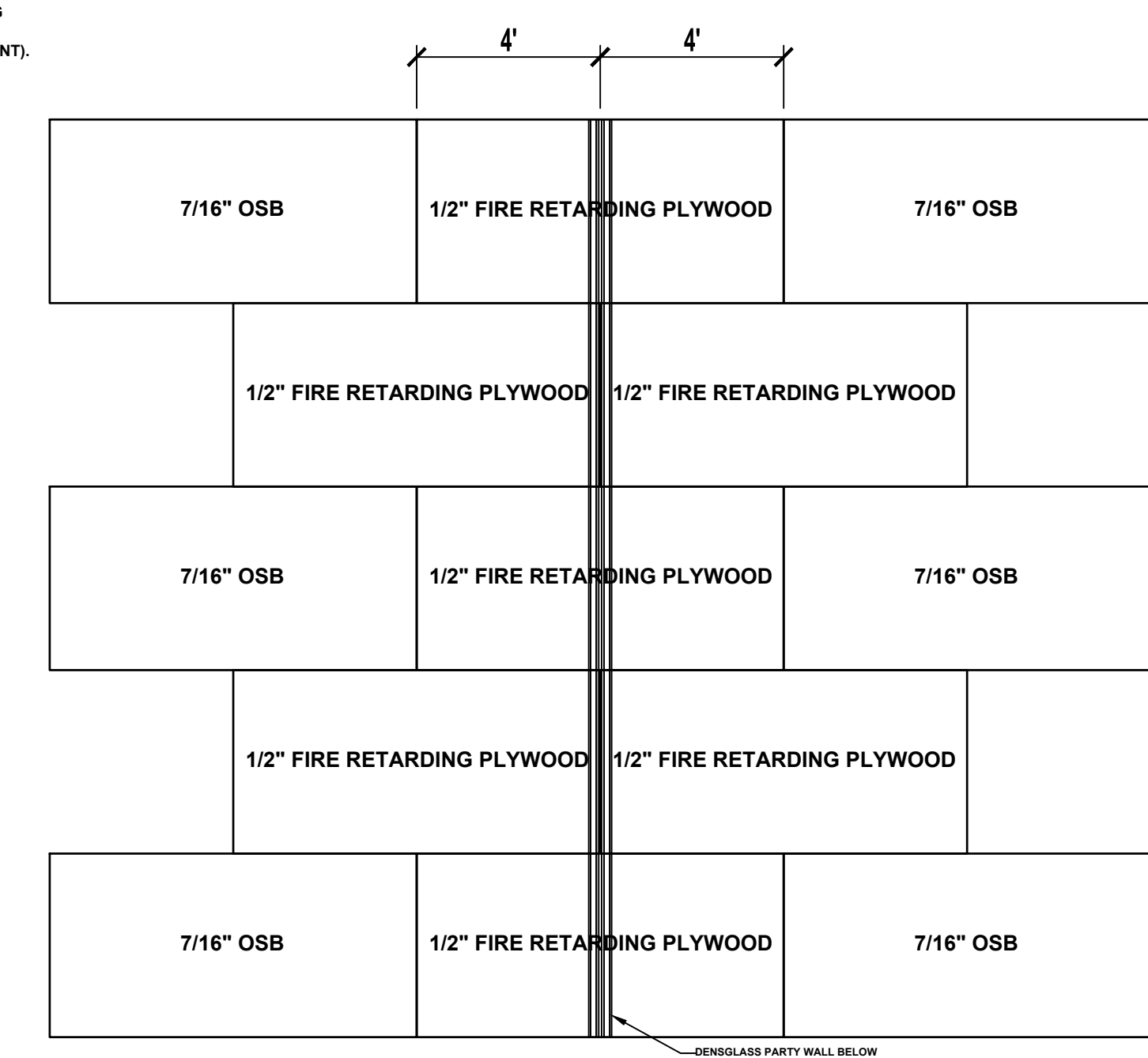
TYPICAL TENANT SEPARATION WALL - UL
DESIGN: U350B
SCALE: N/A



TYPICAL PARTY WALL 2ND FLOOR- UL
DESIGN: U350B
SCALE: N/A



TYPICAL PARTY WALL TO SLAB- UL
DESIGN: U350B
SCALE: N/A



ROOF SHEATHING DETAIL AT PARTY WALL
SCALE: N/A

By

Date

Revisions

No	1	2	3	4	5	6

DUPLIX
2,076 SF
Jacksonville, FL

A Project For:
SOUTHERN IMPRESSION HOMES
5711 Richard St., Suite 1
Jacksonville, FL 32216

Sheet Description
A3.1-Detail

Drawn by: _____ Checked by: _____

Issued Date: _____ Scale (U.N.O.): _____

Printed Date: _____ Sheet Number _____

UL Product IQ®

BXUVU350 - Fire-resistance Ratings - ANSI/UL 263

Design/System/Construction/Assembly Usage Disclaimer

- Authorities Having Jurisdiction should be consulted in all cases as to the particular requirements covering the installation and use of UL Certified products, equipment, systems, devices, and methods.
- Authorities Having Jurisdiction should be consulted before construction.
- Fire resistance assemblies and products are developed by the design submitter and have been investigated by UL for compliance with applicable requirements. The published information cannot always address every construction nuance encountered in the field.
- When field issues arise, it is recommended the field contact assistance for the technical service staff provided by the product manufacturer noted for the design. Users of fire resistance assemblies are advised to consult the general Guide Information for each product category and each group of assemblies. The Guide Information includes specifics concerning alternate materials and alternate methods of construction.
- Only products which bear UL's Mark are considered Certified.

Fire-resistance Ratings - ANSI/UL 263
BXUV - Fire Resistance Ratings - ANSI/UL 263 Certified for United States
BXUV7 - Fire Resistance Ratings - CAN/ULC-S101 Certified for Canada

See General Information for Fire Resistance Ratings - ANSI/UL 263 Certified for United States
 Design Criteria and Alternate Versions
 See General Information for Fire Resistance Ratings - CAN/ULC-S101 Certified for Canada
 Design Criteria and Alternate Versions

Design No. U350

March 16, 2023

Bearing Wall Rating — 2 hr
 Floor Rating — 20 min

STC Ratings — 61, 56 (See Items 2A, 2, 7, 7A)
 This design was evaluated using a load design method other than the Limit States Design Method (e.g., Working Stress Design Method). For jurisdictions employing the Limit States Design Method, such as Canada, a load restriction factor shall be used — See Guide BXUV or BXUV7

* Indicates each product shall bear the UL or cUL Certification Mark for jurisdictions employing the UL or cUL Certification (such as Canada), respectively.

Feedback

U350

UL Product IQ®

BXUVU338 - Fire-resistance Ratings - ANSI/UL 263

Design/System/Construction/Assembly Usage Disclaimer

- Authorities Having Jurisdiction should be consulted in all cases as to the particular requirements covering the installation and use of UL Certified products, equipment, systems, devices, and methods.
- Authorities Having Jurisdiction should be consulted before construction.
- Fire resistance assemblies and products are developed by the design submitter and have been investigated by UL for compliance with applicable requirements. The published information cannot always address every construction nuance encountered in the field.
- When field issues arise, it is recommended the field contact assistance for the technical service staff provided by the product manufacturer noted for the design. Users of fire resistance assemblies are advised to consult the general Guide Information for each product category and each group of assemblies. The Guide Information includes specifics concerning alternate materials and alternate methods of construction.
- Only products which bear UL's Mark are considered Certified.

Fire-resistance Ratings - ANSI/UL 263
BXUV - Fire Resistance Ratings - ANSI/UL 263 Certified for United States
BXUV7 - Fire Resistance Ratings - CAN/ULC-S101 Certified for Canada

See General Information for Fire Resistance Ratings - ANSI/UL 263 Certified for United States
 Design Criteria and Alternate Versions
 See General Information for Fire Resistance Ratings - CAN/ULC-S101 Certified for Canada
 Design Criteria and Alternate Versions

Design No. U338

March 16, 2023

Nonbearing or Bearing Wall Rating — 1 HR
 (See Items 2 and 2A)
 Floor Rating — One Layer of Wallboard — Min. 20 Min.
 Two Layers of Wallboard — Min. 59 Min.

This design was evaluated using a load design method other than the Limit States Design Method (e.g., Working Stress Design Method). For jurisdictions employing the Limit States Design Method, such as Canada, a load restriction factor shall be used — See Guide BXUV or BXUV7

* Indicates each product shall bear the UL or cUL Certification Mark for jurisdictions employing the UL or cUL Certification (such as Canada), respectively.

Feedback

U338

UL Product IQ®

Configuration B

1. Wood Studs — Double row of nom 2 by 4 in., spaced 16 in. OC with two 2 by 4 top and one 2 by 4 bottom plate. As an option, nom 2 in. by 8 in., spaced 24 in. OC with two 2 in. by 8 in. top and one 2 in. by 8 in. bottom plate may be used in lieu of 2 in. by 4 in. studs and plates. Studs effective for sheq. Gypsum stud rows spaced 16 in. apart.

2. Batts and Blankets — Used to achieve the STC Ratings — Faced or unfaced mineral fiber insulation, 3-1/2 in. thick, nom 3.0 psf pressure fit in the wall cavity between studs, plates and cross bracing.

3A. Glass Fiber Insulation — (As an alternate to Item 2, not for use with STC Ratings) — Faced or unfaced glass fiber batts, 3-1/2 in. thick, nom 3.25 psf pressure fit in the wall cavity between stud, plates, and cross bracing may be used. If 2 by 8 in. studs Item 1 are used, min. 5-1/2 in. of unfaced glass fiber batts, nom 3.25 psf pressure fit in the wall cavity between stud, plates, and cross bracing insulation may be applied in multiple layers to achieve final thickness.

3B. Fiberglass Insulation — (As an alternate to Item 2, not for use with STC Ratings) — Blown-in fiberglass loose-fill insulation material. The insulation is applied in a dry state to completely fill the enclosed cavity with a minimum density of 0.25 pcf.

3C. Fiberglass Spray — (As an alternate to Batts and Blankets Item 2, not for use with STC Ratings) — (100% Borax Formulation) — Spray applied cellulose material. The fiber is applied with water to completely fill the enclosed cavity in accordance with the application instructions supplied with the product with a nominal dry density of 2.7 lb/ft³. Blotter Application Method: The fiber is applied without water or adhesive at a nominal dry density of 3.5 lb/ft³ in accordance with the application instructions supplied with the product.

3D. Applegate Gypsum Fiberboard — (100% Borax Formulation) — (100% Borax Formulation) — Spray applied cellulose material. The fiber is applied with water to completely fill the enclosed cavity in accordance with the application instructions supplied with the product. The minimum dry density shall be 4.30 lb/ft³.

3E. Fiberglass Spray — (As an alternate to Batts and Blankets Item 2, not for use with STC Ratings) — Spray applied cellulose material. The fiber is applied with water to interior surfaces in accordance with the application instructions supplied with the product. Applied to completely fill the enclosed cavity. Minimum dry density of 4.3 pounds per cubic ft.

4. Gypsum Board — Any 5/8 in. thick UL Classified Gypsum Board that is eligible for use in Design Nos. U301, U302 or U305. Nom. 5/8 in. thick, 4 ft. wide board, applied vertically over building units (Item 1) or attached directly to the wood studs. Configuration B1 with joints staggered from joints of building units and nailed to studs and bearing plates through the building units in OC, with flat cement coated nails, 1/8 in. long, 5/16 in. shank diam, and 9/32 in. diam head. When constructing Configuration B, 7/8 in. long, 6d corner coated nails spaced 8 in. OC, shall be used to fasten the gypsum board directly to the wood studs. When Item 6, resilient channels are used, gypsum panels applied vertically and secured attached with 1 in. long, self-drilling, self-tapping Type 3 or 3-L steel screws spaced 8 in. OC.

AMERICAN GYPSUM CO (View Classification) — CENR14196
BEILING NEW BUILDING MATERIALS PUBLIC LTD CO (View Classification) — CENR14194
CADOT MANUFACTURING LLC (View Classification) — CENR142370
CERTAINTED GYPSUM INC (View Classification) — CENR143600
GFC INC (View Classification) — CENR141911
GEORGIA PACIFIC GYPSUM L L C (View Classification) — CENR142717
NATIONAL GYPSUM CO (View Classification) — CENR143101
PARCO BUILDING PRODUCTS L L C DBA PARCO GYPSUM (View Classification) — CENR141904
PANEL REV 3 A (View Classification) — CENR141796

Feedback

UL Product IQ®

Configuration B

2. Gypsum Board — (As an alternate to Item 2 through 2E) — Nominal 5/8 in. thick, 4 ft wide panels, applied vertically and secured as described in Item 2 or 2A.

3. Wall and Partition Fittings and Accessories — (As an alternate to Items 2 through 2E) — Nominal 5/8 in. thick, 4 ft wide panels, applied vertically and secured as described in Item 2 or 2A.

PARCO BUILDING PRODUCTS L L C DBA PARCO GYPSUM — Type QuietBlock 517

2C. Gypsum Board — (As an alternate to 5/8 in. Type F50 in Item 2) — 2 layer nom. 5/8 in. thick gypsum panels applied vertically or horizontally. Horizontal joints on the same side need not be staggered. Lower layer attached with fasteners, as described in Item 2, spaced 24 in. OC. Outer layer attached per Item 2.

NATIONAL GYPSUM CO — Type F50

3. Batts and Blankets — (Optional) — Max 1 in. thickness glass or mineral fiber batt insulation.

3A. Fiberglass Spray — (As an alternate to Batts and Blankets Item 4) — Spray applied cellulose insulation material. The fiber is applied with water to completely fill the enclosed cavity in accordance with the application instructions supplied with the product. Applied to completely fill the enclosed cavity. Minimum dry density of 4.3 pounds per cubic ft.

3B. Fiberglass Spray — (As an alternate to Batts and Blankets Item 4) — Spray applied cellulose insulation material. The fiber is applied with water to interior surfaces in accordance with the application instructions supplied with the product. Applied to completely fill the enclosed cavity. Minimum dry density of 4.3 pounds per cubic ft.

3C. Fiberglass Spray — (As an alternate to Batts and Blankets Item 4) — Spray applied cellulose fiber. The fiber is applied with water to completely fill the enclosed cavity in accordance with the application instructions supplied with the product. To facilitate the installation of the material, any thin, woven or non-woven netting may be attached by any means possible to the outer face of the studs. The material shall reach equilibrium moisture content before the installation of materials on either face of the studs. The minimum dry density shall be 3.75 lb/ft³.

3D. Fiberglass Spray — (As an alternate to Batts and Blankets Item 4) — Spray applied cellulose material. The fiber is applied with water to completely fill the enclosed cavity in accordance with the application instructions supplied with the product. To facilitate the installation of the material, any thin, woven or non-woven netting may be attached by any means possible to the outer face of the studs. The material shall reach equilibrium moisture content before the installation of materials on either face of the studs. The minimum dry density shall be 3.75 lb/ft³.

3E. Fiberglass Spray — (As an alternate to Items 2 through 2E) — 5/8 in. thick, 4 ft. wide paper surfaced applied horizontally or vertically and secured with 1-1/8 in. Type W coarse thread gypsum panel steel screws spaced a maximum of 12 in. OC.

CERTAINTED GYPSUM INC — Type SureWall

* Indicates each product shall bear the UL or cUL Certification Mark for jurisdictions employing the UL or cUL Certification (such as Canada), respectively.
 Last Updated on 2023-03-16

The appearance of a company's name or product in this database does not in itself assure that products so identified have been manufactured under UL Solutions' Follow-Up Service. Only those products bearing the UL Mark should be considered to be Certified and covered under UL Solutions' Follow-Up Service. Always look for the Mark on the product.

UL Solutions permits the reproduction of the material contained in Product IQ subject to the following conditions: 1. The Guide Information, Assembly, Construction, Design, System, and/or Certification (Item) must be presented in their entirety and in a non-altering manner, without any modification of the data or drawings; 2. The information "Reprinted from Product IQ with permission from UL Solutions" must appear adjacent to the extracted material; in addition, the reprinted material must include a copyright notice in the following format: "©2023 UL LLC."

AMERICAN GYPSUM CO (View Classification) — CENR14196
BEILING NEW BUILDING MATERIALS PUBLIC LTD CO (View Classification) — CENR14194
CADOT MANUFACTURING LLC (View Classification) — CENR142370
CERTAINTED GYPSUM INC (View Classification) — CENR143600
GFC INC (View Classification) — CENR141911
GEORGIA PACIFIC GYPSUM L L C (View Classification) — CENR142717
NATIONAL GYPSUM CO (View Classification) — CENR143101
PARCO BUILDING PRODUCTS L L C DBA PARCO GYPSUM (View Classification) — CENR141904
PANEL REV 3 A (View Classification) — CENR141796

Feedback

U338

UL Product IQ®

Configuration B

2. Gypsum Board — (As an alternate to Item 2 through 2E) — Nominal 5/8 in. thick, 4 ft wide panels, applied vertically and secured as described in Item 2 or 2A.

3. Wall and Partition Fittings and Accessories — (As an alternate to Items 2 through 2E) — Nominal 5/8 in. thick, 4 ft wide panels, applied vertically and secured as described in Item 2 or 2A.

PARCO BUILDING PRODUCTS L L C DBA PARCO GYPSUM — Type QuietBlock 517

2C. Gypsum Board — (As an alternate to 5/8 in. Type F50 in Item 2) — 2 layer nom. 5/8 in. thick gypsum panels applied vertically or horizontally. Horizontal joints on the same side need not be staggered. Lower layer attached with fasteners, as described in Item 2, spaced 24 in. OC. Outer layer attached per Item 2.

NATIONAL GYPSUM CO — Type F50

3. Batts and Blankets — (Optional) — Max 1 in. thickness glass or mineral fiber batt insulation.

3A. Fiberglass Spray — (As an alternate to Batts and Blankets Item 4) — Spray applied cellulose insulation material. The fiber is applied with water to completely fill the enclosed cavity in accordance with the application instructions supplied with the product. Applied to completely fill the enclosed cavity. Minimum dry density of 4.3 pounds per cubic ft.

3B. Fiberglass Spray — (As an alternate to Batts and Blankets Item 4) — Spray applied cellulose insulation material. The fiber is applied with water to interior surfaces in accordance with the application instructions supplied with the product. Applied to completely fill the enclosed cavity. Minimum dry density of 4.3 pounds per cubic ft.

3C. Fiberglass Spray — (As an alternate to Batts and Blankets Item 4) — Spray applied cellulose fiber. The fiber is applied with water to completely fill the enclosed cavity in accordance with the application instructions supplied with the product. To facilitate the installation of the material, any thin, woven or non-woven netting may be attached by any means possible to the outer face of the studs. The material shall reach equilibrium moisture content before the installation of materials on either face of the studs. The minimum dry density shall be 3.75 lb/ft³.

3D. Fiberglass Spray — (As an alternate to Batts and Blankets Item 4) — Spray applied cellulose material. The fiber is applied with water to completely fill the enclosed cavity in accordance with the application instructions supplied with the product. To facilitate the installation of the material, any thin, woven or non-woven netting may be attached by any means possible to the outer face of the studs. The material shall reach equilibrium moisture content before the installation of materials on either face of the studs. The minimum dry density shall be 3.75 lb/ft³.

3E. Fiberglass Spray — (As an alternate to Items 2 through 2E) — 5/8 in. thick, 4 ft. wide paper surfaced applied horizontally or vertically and secured with 1-1/8 in. Type W coarse thread gypsum panel steel screws spaced a maximum of 12 in. OC.

CERTAINTED GYPSUM INC — Type SureWall

* Indicates each product shall bear the UL or cUL Certification Mark for jurisdictions employing the UL or cUL Certification (such as Canada), respectively.
 Last Updated on 2023-03-16

The appearance of a company's name or product in this database does not in itself assure that products so identified have been manufactured under UL Solutions' Follow-Up Service. Only those products bearing the UL Mark should be considered to be Certified and covered under UL Solutions' Follow-Up Service. Always look for the Mark on the product.

UL Solutions permits the reproduction of the material contained in Product IQ subject to the following conditions: 1. The Guide Information, Assembly, Construction, Design, System, and/or Certification (Item) must be presented in their entirety and in a non-altering manner, without any modification of the data or drawings; 2. The information "Reprinted from Product IQ with permission from UL Solutions" must appear adjacent to the extracted material; in addition, the reprinted material must include a copyright notice in the following format: "©2023 UL LLC."

AMERICAN GYPSUM CO (View Classification) — CENR14196
BEILING NEW BUILDING MATERIALS PUBLIC LTD CO (View Classification) — CENR14194
CADOT MANUFACTURING LLC (View Classification) — CENR142370
CERTAINTED GYPSUM INC (View Classification) — CENR143600
GFC INC (View Classification) — CENR141911
GEORGIA PACIFIC GYPSUM L L C (View Classification) — CENR142717
NATIONAL GYPSUM CO (View Classification) — CENR143101
PARCO BUILDING PRODUCTS L L C DBA PARCO GYPSUM (View Classification) — CENR141904
PANEL REV 3 A (View Classification) — CENR141796

Feedback

UL Product IQ®

Configuration B

2. Gypsum Board — (As an alternate to Item 2 through 2E) — Nominal 5/8 in. thick, 4 ft wide panels, applied vertically and secured as described in Item 2 or 2A.

3. Wall and Partition Fittings and Accessories — (As an alternate to Items 2 through 2E) — Nominal 5/8 in. thick, 4 ft wide panels, applied vertically and secured as described in Item 2 or 2A.

PARCO BUILDING PRODUCTS L L C DBA PARCO GYPSUM — Type QuietBlock 517

2C. Gypsum Board — (As an alternate to 5/8 in. Type F50 in Item 2) — 2 layer nom. 5/8 in. thick gypsum panels applied vertically or horizontally. Horizontal joints on the same side need not be staggered. Lower layer attached with fasteners, as described in Item 2, spaced 24 in. OC. Outer layer attached per Item 2.

NATIONAL GYPSUM CO — Type F50

3. Batts and Blankets — (Optional) — Max 1 in. thickness glass or mineral fiber batt insulation.

3A. Fiberglass Spray — (As an alternate to Batts and Blankets Item 4) — Spray applied cellulose insulation material. The fiber is applied with water to completely fill the enclosed cavity in accordance with the application instructions supplied with the product. Applied to completely fill the enclosed cavity. Minimum dry density of 4.3 pounds per cubic ft.

3B. Fiberglass Spray — (As an alternate to Batts and Blankets Item 4) — Spray applied cellulose insulation material. The fiber is applied with water to interior surfaces in accordance with the application instructions supplied with the product. Applied to completely fill the enclosed cavity. Minimum dry density of 4.3 pounds per cubic ft.

3C. Fiberglass Spray — (As an alternate to Batts and Blankets Item 4) — Spray applied cellulose fiber. The fiber is applied with water to completely fill the enclosed cavity in accordance with the application instructions supplied with the product. To facilitate the installation of the material, any thin, woven or non-woven netting may be attached by any means possible to the outer face of the studs. The material shall reach equilibrium moisture content before the installation of materials on either face of the studs. The minimum dry density shall be 3.75 lb/ft³.

3D. Fiberglass Spray — (As an alternate to Batts and Blankets Item 4) — Spray applied cellulose material. The fiber is applied with water to completely fill the enclosed cavity in accordance with the application instructions supplied with the product. To facilitate the installation of the material, any thin, woven or non-woven netting may be attached by any means possible to the outer face of the studs. The material shall reach equilibrium moisture content before the installation of materials on either face of the studs. The minimum dry density shall be 3.75 lb/ft³.

3E. Fiberglass Spray — (As an alternate to Items 2 through 2E) — 5/8 in. thick, 4 ft. wide paper surfaced applied horizontally or vertically and secured with 1-1/8 in. Type W coarse thread gypsum panel steel screws spaced a maximum of 12 in. OC.

CERTAINTED GYPSUM INC — Type SureWall

* Indicates each product shall bear the UL or cUL Certification Mark for jurisdictions employing the UL or cUL Certification (such as Canada), respectively.
 Last Updated on 2023-03-16

The appearance of a company's name or product in this database does not in itself assure that products so identified have been manufactured under UL Solutions' Follow-Up Service. Only those products bearing the UL Mark should be considered to be Certified and covered under UL Solutions' Follow-Up Service. Always look for the Mark on the product.

UL Solutions permits the reproduction of the material contained in Product IQ subject to the following conditions: 1. The Guide Information, Assembly, Construction, Design, System, and/or Certification (Item) must be presented in their entirety and in a non-altering manner, without any modification of the data or drawings; 2. The information "Reprinted from Product IQ with permission from UL Solutions" must appear adjacent to the extracted material; in addition, the reprinted material must include a copyright notice in the following format: "©2023 UL LLC."

AMERICAN GYPSUM CO (View Classification) — CENR14196
BEILING NEW BUILDING MATERIALS PUBLIC LTD CO (View Classification) — CENR14194
CADOT MANUFACTURING LLC (View Classification) — CENR142370
CERTAINTED GYPSUM INC (View Classification) — CENR143600
GFC INC (View Classification) — CENR141911
GEORGIA PACIFIC GYPSUM L L C (View Classification) — CENR142717
NATIONAL GYPSUM CO (View Classification) — CENR143101
PARCO BUILDING PRODUCTS L L C DBA PARCO GYPSUM (View Classification) — CENR141904
PANEL REV 3 A (View Classification) — CENR141796

Feedback

U338

No	Revisions	Date	By
1			
2			
3			
4			
5			
6			

DUPLEX
2,076 SF
 Jacksonville, FL

A Project For:
SOUTHERN IMPRESSION HOMES
 5711 Richard St, Suite 1
 Jacksonville, FL 32216

Sheet Description
A3.2-Detail UL

Drawn by:	Checked by:
Issued Date:	Scale (UN.O.):
Printed Date:	Sheet Number